

QUICK CONNECT PNEUMATIC COUPLINGS



2 Table of Contents



3 Nipple Profile



4 Choosing the Right Coupling



5 CEJN
220 Series



6 CEJN
300 eSafe Series Couplings
300 Standard Nipples



7 CEJN
310 eSafe Series Couplings
310 Standard Nipples



8 CEJN
315 eSafe Series Couplings
315 Standard Nipples



10 CEJN
320 eSafe Series Couplings
320 Standard Nipples



12 CEJN
320 eSafe Multi-Link &
Female Adaptor Multi-Link



12 CEJN
Soft-Line Covers &
Assembly Tools



13 CEJN
326 eSafe Series Couplings
326 Standard Nipples



14 CEJN
410 eSafe Series Couplings
410 Standard Nipples



16 CEJN
416 eSafe Series Couplings
416 Standard Nipples



17 CEJN
430 eSafe Series Couplings
430 Standard Nipples



18 CEJN
550 eSafe Series Couplings
550 Standard Nipples



19 CEJN
Streamline Adaptors &
Accessories



19 CEJN
PUR Hose & Assemblies



23 CEJN
341 Breathing Air Series



24 CEJN
342 Breathing Air Series



25 CEJN
344 Breathing Air Series

QUICK CONNECT PNEUMATIC COUPLINGS

New
Additions



26

CEJN
345 Breathing Air Series



35

PARKAIR
399 Series and Whip Hose
Assemblies

New
Additions



27

CEJN
442 Breathing Air Series



36

PARKAIR
499 Series Heavy Duty



28

PARKAIR
CP17 Series



37

PCL
Airflow Series



29

PARKAIR
CP19 Series



38

PCL
Vertex Series



30

PARKAIR
21 Series



39

PCL
60 / 100 Series



31

PARKAIR
CP21 Series
Colour-Coded



40

PCL
Safeflow Safety Series



31

PARKAIR
CP21 Series
Brass



41

PCL
Instant-Air Series Steel



32

PARKAIR
CP33 Series



42

PCL
Instant-Air Series Brass



33

PARKAIR
CP34 Series



43

PARKAIR
Airline Series



34

SCHRADER
Twistlock Series Standard
and Heavy Duty

ENO

GENERAL PURPOSE COUPLINGS (NOT TO SCALE)

PAGE

DESCRIPTION

**5 Series 220**

Flow Capacity: 580 l/min (20.5 CFM)
Temperature Range: -30°C to +100°C (-22°F to +212°F)
Working Pressure: 35 bar (507 psi)
Suitability: Pressure and Vacuum applications

**6 Series 300 eSafe**

Interchange: Series 210 Standard, Series 14 / 22
Flow Capacity: 1050 l/min (37.1 CFM)
Temperature Range: -20°C to +100°C (-4°F to +212°F)
Working Pressure: 16 bar (232 psi)
Suitability: Pressure applications only

**7 Series 310 eSafe**

Interchange: A-A 59439, ISO 6150B, Series 23 / 24
Flow Capacity: 950 l/min (33.5 CFM)
Temperature Range: -20°C to +100°C (-4°F to +212°F)
Working Pressure: 16 bar (232 psi)
Suitability: Pressure applications only

**8-9 Series 315 eSafe**

Interchange: Asian Standard, Series 13
Flow Capacity: 1950 l/min (68.9 CFM)
Temperature Range: -20°C to +100°C (-4°F to +212°F)
Working Pressure: 16 bar (232 psi)
Suitability: Pressure applications only

**10-11 Series 320 eSafe**

Interchange: Euro Standard 7.6 (7.4), Series 25
Flow Capacity: 2250 l/min (79.4 CFM)
Temperature Range: -20°C to +100°C (-4°F to +212°F)
Working Pressure: 16 bar (232 psi)
Suitability: Pressure applications only

**13 Series 326 eSafe stainless steel**

Interchange: Euro Standard 7.6 (7.4), Series 25
Flow Capacity: 1800 l/min (63.5 CFM)
Temperature Range: -20°C to +100°C (-4°F to +212°F)
Working Pressure: 16 bar (232 psi)
Suitability: Pressure applications only

**14-15 Series 410 eSafe**

Interchange: Euro Standard 10.4, Series 27
Flow Capacity: 4000 l/min (141.2 CFM)
Temperature Range: -20°C to +100°C (-4°F to +212°F)
Working Pressure: 16 bar (232 psi)
Suitability: Pressure applications only

**16 Series 416 eSafe stainless steel**

Flow Capacity: 4000 l/min (141.2 CFM)
Temperature Range: -20°C to +100°C (-4°F to +212°F)
Working Pressure: 16 bar (232 psi)
Suitability: Pressure applications only

**17 Series 430 eSafe**

Interchange: A-A 59439 (former US Standard MIL C 4109 3/8") ISO 6150B
Flow Capacity: 2500 l/min (88.3 CFM)
Temperature Range: -20°C to +100°C (-4°F to +212°F)
Working Pressure: 16 bar (232 psi)
Suitability: Pressure applications only

**18 Series 550 eSafe**

Interchange: A-A 59439 (former US Standard MIL C 4109 1/2") ISO 6150B
Flow Capacity: 4050 l/min (143.0 CFM)
Temperature Range: -20°C to +100°C (-4°F to +212°F)
Working Pressure: 16 bar (232 psi)
Suitability: Pressure applications only

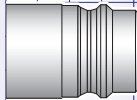
PNEUMATIC

BREATHING AIR

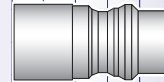
SERIES 220 **PAGE No. 5**
CEJN Original Standard



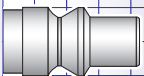
SERIES 410 **PAGE No. 14-15**
Interchange: Series 27



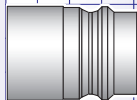
SERIES 341 **PAGE No. 23**



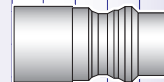
SERIES 300 **PAGE No. 6**
Interchange:
Series 210 Standard / Series 14



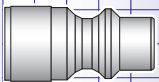
SERIES 416 **PAGE No. 16**



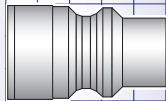
SERIES 342 **PAGE No. 24**
Interchange: Series 96



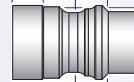
SERIES 310 **PAGE No. 7**
Interchange:
A-A 59439 / ISO 6150B / Series 23



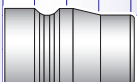
SERIES 430 **PAGE No. 17**
Interchange: US-Mil-C-4109 /
US Industrial Standard



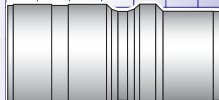
SERIES 344 **PAGE No. 25**



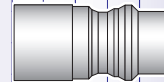
SERIES 315 **PAGE No. 8-9**
Asian Standard / Series 13



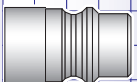
SERIES 550 **PAGE No. 18**
Interchange: US-Mil-C-4109 /
US Industrial Standard



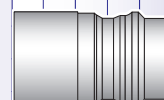
SERIES 345 **PAGE No. 26**



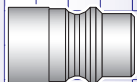
SERIES 320 **PAGE No. 10-11**
CEJN Original Standard
Interchange:
Euro Standard / Series 25



SERIES 442 **PAGE No. 27**



SERIES 326 STAINLESS STEEL
PAGE No. 13
CEJN Original Standard
Interchange: Euro Standard / Series 25



NOT TO SCALE
If you require further
information about
these products or any
other products in this
catalogue, please contact
your distributor



With over 60 years' experience, CEJN has become the leading company in the product development of quick connect couplings. CEJN has become the industry's choice for quick connect couplings for all kinds of applications (i.e. pneumatic, breathing air, gases, hydraulics, fluids and other media).

Compressed air











Breathing air










Fluid



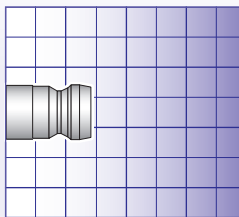
Series number	220	300 eSafe	310 eSafe	315 eSafe	320 eSafe	326 eSafe	410 eSafe	416 eSafe
Page number	5	6	7	8-9	10-11	13	14-15	16
Nominal flow diameter mm	5	5.5	5.3	7.5	7.6	7.6	10.4	10.4
Max. working pressure bar	35	16	16	16	16	16	16	16
Flow rate litres/min	580	1050	950	1950	2250	1800	4000	4000
One-way shut-off	Yes	Yes	Yes	Yes	Yes	Yes	Yes	Yes
Two-way shut-off	No	No	No	No	No	No	No	No
Straight through	No	No	No	No	No	No	No	No
Seal material	Nitrile	Nitrile	Nitrile	Nitrile	Nitrile	Nitrile	Nitrile	Nitrile
Applications								



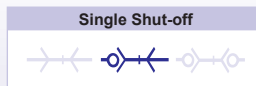
Series number	430 eSafe	550 eSafe	341	342	344	345	442
Page number	17	18	23	24	25	26	27
Nominal flow diameter mm	8.2	11	7.4	7.4	7.4	6.2	10.4
Max. working pressure bar	16	16	35	35	35	35	35
Flow rate litres/min	2500	4050	1950	1950	1950	1100	3950
One-way shut-off	Yes	Yes	Yes	Yes	Yes	Yes	Yes
Two-way shut-off	No	No	No	No	No	No	No
Straight through	No	No	No	No	No	No	No
Seal material	Nitrile	Nitrile	Nitrile	Nitrile	Nitrile	Nitrile	Nitrile
Applications							

FEATURES	BENEFITS
<ul style="list-style-type: none"> • Compact and lightweight • High flow capacity • Small external dimensions • Suitable for vacuum 	<ul style="list-style-type: none"> • Fast, easy, one hand operation • Extremely efficient
SPECIFICATIONS	
Nominal flow diameter	5 mm (3/16")
Flow capacity	580 l/min (20.5 CFM)*
Max. working pressure	35 bar (507 psi)
Min. burst pressure	140 bar (2,030 psi)
Temperature range	-30°C to +100°C (-22°F to +212°F)
Coupling material	Nickel plated brass
Nipple material	Hardened zinc plated steel

NPT Threads are available



Not actual size

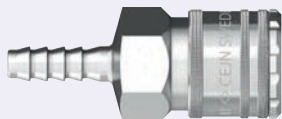


*Flow capacity measured at 6 bar (87 psi) inlet pressure and pressure drop at 0.5 bar (7 psi)

COUPLINGS

NIPPLES

CEJN SERIES 220 HOSE BARB



210

PART NUMBER	CONNECTION
C102201001	5 mm 3/16"
C102201002	6 mm 1/4"
C102201003	8 mm 5/16"
C102201004	10 mm 3/8"

CEJN SERIES 220 HOSE BARB



210

PART NUMBER	CONNECTION
C102205001	5 mm 3/16"
C102205002	6 mm 1/4"
C102205003	8 mm 5/16"
C102205004	10 mm 3/8"

CEJN SERIES 220 MALE THREAD



210

PART NUMBER	CONNECTION
C102201151	1/8" BSPT
C102201152	1/4" BSPT
C102201154	3/8" BSPT

CEJN SERIES 220 MALE THREAD



210

PART NUMBER	CONNECTION
C102205151	1/8" BSPT
C102205152	1/4" BSPT
C102205154	3/8" BSPT

CEJN SERIES 220 FEMALE THREAD



210

PART NUMBER	CONNECTION
C102201201	1/8" BSPP
C102201202	1/4" BSPP
C102201204	3/8" BSPP

CEJN SERIES 220 FEMALE THREAD

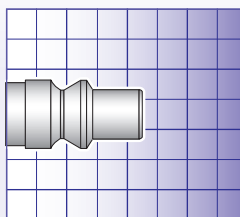


210

PART NUMBER	CONNECTION
C102205201	1/8" BSPP
C102205202	1/4" BSPP
C102205204	3/8" BSPP

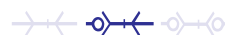


FEATURES	BENEFITS
<ul style="list-style-type: none"> • High flow capacity • Low connection force • Male threads on couplings / nipples feature pre-applied thread sealant • ISO Standard 4414 and EN 983 	<ul style="list-style-type: none"> • Fast, easy, one hand operation • Extremely energy efficient • Strong and durable for long life
SPECIFICATIONS	
Nominal flow diameter	5.5 mm (7/32")
Flow capacity	1050 l/min (37.1 CFM)*
Max. working pressure	16 bar (232 psi)
Min. burst pressure	140 bar (2030 psi)
Temperature range	-20°C to +100°C (-4°F to +212°F)
Coupling material	Zinc plated steel / brass
Coupling seal material	Nitrile
Nipple material	Hardened zinc plated steel
Connection force	86 N



Not actual size

Single Shut-off



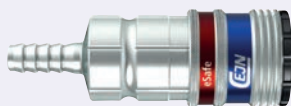
Interchange

ARO 210 Standard

*Flow capacity measured at 6 bar (87 psi) inlet pressure and pressure drop at 0.5 bar (7 psi).

NPT threads are available

eSAFE VENTED SAFETY COUPLINGS

CEJN SERIES 300
HOSE BARB

246

PART NUMBER	CONNECTION
C103002002	6.3 mm 1/4"
C103002003	8 mm 5/16"
C103002009	9 mm 11/32"
C103002004	10 mm 3/8"
C103002005	13 mm 1/2"

CEJN SERIES 300
MALE THREAD
with Loctite Dry-Seal®

246

PART NUMBER	CONNECTION
C103002152	1/4" BSPT
C103002154	3/8" BSPT
C103002155	1/2" BSPT

CEJN SERIES 300
FEMALE THREAD

246

PART NUMBER	CONNECTION
C103002202	1/4" BSPP
C103002204	3/8" BSPP
C103002205	1/2" BSPP

CEJN SERIES 300
STREAM-LINE CONNECTION

246

PART NUMBER	CONNECTION
C103002060	6.5 x 10 mm
C103002062	8 x 12 mm
C103002063	9.5 x 13.5 mm
C103002066	11 x 16 mm

CEJN SERIES 300
SOFT-LINE CONNECTION

246

PART NUMBER	CONNECTION
C103002082	8 x 12 mm
C103002083	9.5 x 13.5 mm

STANDARD NIPPLES

CEJN SERIES 300
HOSE BARB

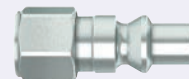
220

PART NUMBER	CONNECTION
C103005002	6 mm 1/4"
C103005003	8 mm 5/16"
C103005004	10 mm 3/8"

CEJN SERIES 300
MALE THREAD
with Loctite Dry-Seal®

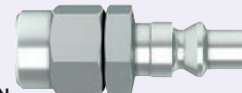
220

PART NUMBER	CONNECTION
C103005151	1/8" BSPT
C103005152	1/4" BSPT
C103005154	3/8" BSPT
C103005155	1/2" BSPT

CEJN SERIES 300
FEMALE THREAD

220

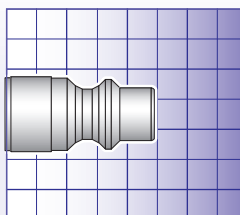
PART NUMBER	CONNECTION
C103005201	1/8" BSPP
C103005202	1/4" BSPP
C103005204	3/8" BSPP

CEJN SERIES 300
STREAM-LINE CONNECTION

220

PART NUMBER	CONNECTION
C103005058	5 x 8 mm
C103005060	6.5 x 10 mm
C103005062	8 x 12 mm
C103005063	9.5 x 13.5 mm
C103005066	11 x 16 mm

FEATURES	BENEFITS
<ul style="list-style-type: none"> Pre-applied sealant on male threads Vented safety function Low connection force Complies with ISO Standard 4414 and EN 983 	<ul style="list-style-type: none"> Easy to grip Fast one hand operation Extremely energy efficient Minimises the risk of sudden component separation
SPECIFICATIONS	
Nominal flow diameter	5.3 mm (7/32")
Flow capacity	950 l/min (33.5 CFM)*
Max. working pressure	16 bar (232 psi)
Min. burst pressure	140 bar (2030 psi)
Temperature range	-20°C to +100°C (-4°F to +212°F)
Coupling material	Zinc plated steel / brass
Coupling seal material	Nitrile
Nipple material	Hardened zinc plated steel
Connection force	86 N



Not actual size

Single Shut-off



Interchange

ISO Standard 6150 B,
A-A 59439

*Flow capacity measured at 6 bar (87 psi) inlet pressure and pressure drop at 0.5 bar (7 psi).

NPT threads are available

eSAFE VENTED SAFETY COUPLINGS



CEJN SERIES 310 HOSE BARB



246

PART NUMBER	CONNECTION
C103102002	6.3 mm 1/4"
C103102003	8 mm 5/16"
C103102009	9 mm 11/32"
C103102004	10 mm 3/8"
C103102005	13 mm 1/2"

CEJN SERIES 310 MALE THREAD with Loctite Dry-Seal®



246

PART NUMBER	CONNECTION
C103102152	1/4" BSPT
C103102154	3/8" BSPT
C103102155	1/2" BSPT

CEJN SERIES 310 FEMALE THREAD



246

PART NUMBER	CONNECTION
C103102202	1/4" BSPP
C103102204	3/8" BSPP
C103102205	1/2" BSPP

CEJN SERIES 310 STREAM-LINE CONNECTION



246

PART NUMBER	CONNECTION
C103102058	5 x 8 mm
C103102060	6.5 x 10 mm
C103102062	8 x 12 mm
C103102063	9.5 x 13.5 mm
C103102066	11 x 16 mm



CEJN SERIES 310 SOFT-LINE CONNECTION



246

PART NUMBER	CONNECTION
C103102082	8 x 12 mm
C103102083	9.5 x 13.5 mm

STANDARD NIPPLES

CEJN SERIES 310 HOSE BARB



220

PART NUMBER	CONNECTION
C103105001	5 mm 3/16"
C103105002	6 mm 1/4"
C103105003	8 mm 5/16"
C103105004	10 mm 3/8"
C103105005	13 mm 1/2"

CEJN SERIES 310 MALE THREAD with Loctite Dry-Seal®



220

PART NUMBER	CONNECTION
C103105151	1/8" BSPT
C103105152	1/4" BSPT
C103105154	3/8" BSPT

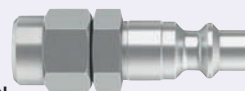
CEJN SERIES 310 FEMALE THREAD



220

PART NUMBER	CONNECTION
C103105201	1/8" BSPP
C103105202	1/4" BSPP
C103105204	3/8" BSPP

CEJN SERIES 310 STREAM-LINE CONNECTION



220

PART NUMBER	CONNECTION
C103105058	5 x 8 mm
C103105060	6.5 x 10 mm
C103105062	8 x 12 mm
C103105063	9.5 x 13.5 mm
C103105066	11 x 16 mm



PNEUMATIC – 315 eSAFE SERIES



FEATURES

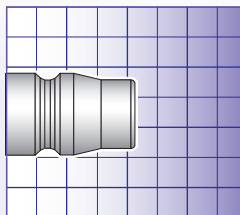
- Vented safety function
- Extremely high flow capacity
- Compact design
- Smaller outside dimension than comparable designs

BENEFITS

- Easy to handle
- One hand operation
- Fully automatic operation
- Extremely energy efficient

SPECIFICATIONS

Nominal flow diameter	7.5 mm (5/16")
Flow capacity	1950 l/min (68.8 CFM)*
Max. working pressure	16 bar (232 psi)
Min. burst pressure	140 bar (2030 psi)
Temperature range	-20°C to +100°C (-4°F to +212°F)
Coupling material	Zinc plated steel / brass
Coupling seal material	Nitrile
Nipple material	Hardened zinc plated steel
Connection force	86 N

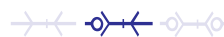


Not actual size

*Flow capacity measured at 6 bar (87 psi) inlet pressure and pressure drop at 0.5 bar (7 psi).

NPT threads are available

Single Shut-off



Interchange

Asian Standard
Series 13

eSAFE VENTED SAFETY COUPLINGS

CEJN SERIES 315 HOSE BARB



246

PART NUMBER	CONNECTION
C103152002	6.3 mm 1/4"
C103152043	7 mm 9/32"
C103152004	10 mm 3/8"
C103152005	13 mm 1/2"

CEJN SERIES 315 STREAM-LINE CONNECTION



246

PART NUMBER	CONNECTION
C103152058	5 x 8 mm
C103152060	6.5 x 10 mm
C103152062	8 x 12 mm
C103152063	9.5 x 13 mm
C103152066	11 x 16 mm

CEJN SERIES 315 MALE THREAD



246

PART NUMBER	CONNECTION
C103152152	1/4" BSPT
C103152154	3/8" BSPT
C103152155	1/2" BSPT

CEJN SERIES 315 STREAM-LINE CONNECTION WITH LOCK RING



246

PART NUMBER	CONNECTION
C103152090	6.5 x 10 mm
C103152092	8 x 12 mm
C103152096	11 x 16 mm

CEJN SERIES 315 FEMALE THREAD



246

PART NUMBER	CONNECTION
C103152202	1/4" BSPP
C103152204	3/8" BSPP



CEJN SERIES 315 SOFT-LINE CONNECTION



246

PART NUMBER	CONNECTION
C103152082	8 x 12 mm
C103152083	9.5 x 13.5 mm
C103152085	11 x 16 mm

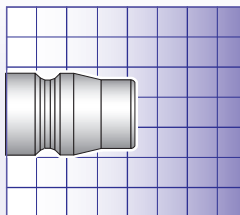
CEJN SERIES 315 FEMALE THREAD WITH LOCK RING



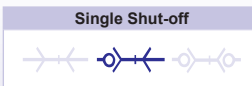
246

PART NUMBER	CONNECTION
C103152244	3/8" BSPP

FEATURES	BENEFITS
<ul style="list-style-type: none"> Vented safety function Extremely high flow capacity Compact design Smaller outside dimension than comparable designs 	<ul style="list-style-type: none"> Easy to handle One hand operation Fully automatic operation Extremely energy efficient
SPECIFICATIONS	
Nominal flow diameter	7.5 mm (5/16")
Flow capacity	1950 l/min (68.8 CFM)*
Max. working pressure	16 bar (232 psi)
Min. burst pressure	140 bar (2030 psi)
Temperature range	-20°C to +100°C (-4°F to +212°F)
Coupling material	Zinc plated steel/brass
Coupling seal material	Nitrile
Nipple material	Hardened zinc plated steel
Connection force	86 N



Not actual size



*Flow capacity measured at 6 bar (87 psi) inlet pressure and pressure drop at 0.5 bar (7 psi).

NPT threads are available

STANDARD NIPPLES

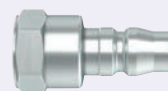
CEJN SERIES 315 HOSE BARB



230

PART NUMBER	CONNECTION
C103155002	6 mm 1/4"
C103155043	7 mm 9/32"
C103155004	10 mm 3/8"
C103155005	13 mm 1/2"

CEJN SERIES 315 FEMALE THREAD



230

PART NUMBER	CONNECTION
C103155102	1/4" BSPT
C103155104	3/8" BSPT
C103155105	1/2" BSPT

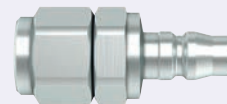
CEJN SERIES 315 MALE THREAD



230

PART NUMBER	CONNECTION
C103155151	1/8" BSPT
C103155152	1/4" BSPT
C103155154	3/8" BSPT
C103155155	1/2" BSPT

CEJN SERIES 315 STREAM-LINE CONNECTION



230

PART NUMBER	CONNECTION
C103155058	5 x 8 mm
C103155060	6.5 x 10 mm
C103155062	8 x 12 mm
C103155063	9.5 x 13.5 mm
C103155066	11 x 16 mm

You may also need ...

Tubing, hose and ducting

- PVC Tubing & Hose
- Nylon Tubing
- Nylon Recoils
- Polyurethane Tube
- Polyurethane Recoils



... on pages 496 – 567, section 10



FEATURES

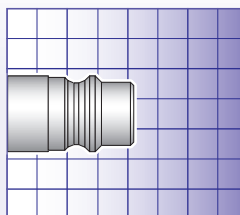
- Vented safety function
- Extremely high flow capacity
- Compact design
- Pre-applied sealant on male threads
- Smaller outside dimension than comparable designs

BENEFITS

- Easy to handle
- One hand operation
- Fully automatic operation
- Extremely energy efficient

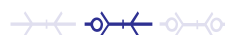
SPECIFICATIONS

Nominal flow diameter	7.6 mm (5/16")
Flow capacity	2250 l/min (79.4 CFM)*
Max. working pressure	16 bar (232 psi)
Min. burst pressure	140 bar (2030 psi)
Connection force	86 N
Temperature range	-20°C to +100°C (-4°F to +212°F)
Coupling material	Zinc plated steel / brass
Coupling seal material	Nitrile
Nipple material	Hardened zinc plated steel



Not actual size

Single Shut-off



Interchange

CEJN Original,
Eurostandard

*High Flow capacity

*Flow capacity measured at 6 bar (87 psi) inlet pressure and pressure drop at 0.5 bar (7 psi).

NPT threads are available

eSAFE VENTED SAFETY COUPLINGS

CEJN SERIES 320
HOSE BARB

246

PART NUMBER	CONNECTION
C103202002	6 mm 1/4"
C103202003	8 mm 5/16"
C103202009	9 mm 11/32"
C103202004	10 mm 3/8"
C103202005	13 mm 1/2"

CEJN SERIES 320
STREAM-LINE CONNECTION

246

PART NUMBER	CONNECTION
C103202058	5 x 8 mm
C103202060	6.5 x 10 mm
C103202062	8 x 12 mm
C103202063	9.5 x 13.5 mm
C103202066	11 x 16 mm
C103202068	13 x 18 mm

CEJN SERIES 320
MALE THREAD
with Loctite Dry-Seal®

246

PART NUMBER	CONNECTION
C103202152	1/4" BSPT
C103202154	3/8" BSPT
C103202155	1/2" BSPT

CEJN SERIES 320
STREAM-LINE CONNECTION
WITH LOCK RING

246

PART NUMBER	CONNECTION
C103202090	6.5 x 10 mm
C103202092	8 x 12 mm
C103202096	11 x 16 mm

CEJN SERIES 320
FEMALE THREAD

246

PART NUMBER	CONNECTION
C103202202	1/4" BSPP
C103202204	3/8" BSPP
C103202205	1/2" BSPP

CEJN SERIES 320
SOFT-LINE CONNECTION

246

PART NUMBER	CONNECTION
C103202082	8 x 12 mm
C103202083	9.5 x 13.5 mm
C103202085	11 x 16 mm
C103202088	13 x 18 mm

CEJN SERIES 320
FEMALE THREAD
WITH LOCK RING

246

PART NUMBER	CONNECTION
C103202244	3/8" BSPP

FEATURES

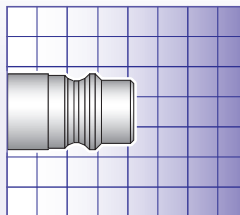
- Vented safety function
- Extremely high flow capacity
- Compact design
- Pre-applied sealant on male threads
- Smaller outside dimension than comparable designs

BENEFITS

- Easy to handle
- One hand operation
- Fully automatic operation
- Extremely energy efficient

SPECIFICATIONS

Nominal flow diameter	7.6 mm (5/16")
Flow capacity	2250 l/min (79.4 CFM)*
Max. working pressure	16 bar (232 psi)
Min. burst pressure	140 bar (2030 psi)
Connection force	86 N
Temperature range	-20°C to +100°C (-4°F to +212°F)
Coupling material	Zinc plated steel / brass
Coupling seal material	Nitrile
Nipple material	Hardened zinc plated steel



Not actual size

Single Shut-off



Interchange

CEJN Original,
Eurostandard

*High Flow capacity

*Flow capacity measured at 6 bar (87 psi) inlet pressure and pressure drop at 0.5 bar (7 psi).

NPT Threads are available

STANDARD NIPPLES

CEJN SERIES 320 HOSE BARB



240

PART NUMBER	CONNECTION
C103205001	5 mm 3/16"
C103205002	6 mm 1/4"
C103205003	8 mm 5/16"
C103205004	10 mm 3/8"
C103205005	13 mm 1/2"

CEJN SERIES 320

MALE THREAD

with Loctite Dry-Seal®



240

PART NUMBER	CONNECTION
C103205151	1/8" BSPT
C103205152	1/4" BSPT
C103205154	3/8" BSPT
C103205155	1/2" BSPT

CEJN SERIES 320

FEMALE THREAD



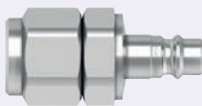
240

PART NUMBER	CONNECTION
C103205201	1/8" BSPP
C103205202	1/4" BSPP
C103205204	3/8" BSPP
C103205205	1/2" BSPP

New
Additions

CEJN SERIES 320

STREAM-LINE CONNECTION



285

PART NUMBER	CONNECTION
C103205058	5 x 8 mm
C103205060	6.5 x 10 mm
C103205062	8 x 12 mm
C103205063	9.5 x 13.5 mm
C103205066	11 x 16 mm
C103205068	13 x 18 mm

HOSE WHIP ASSEMBLIES



1350

CEJN SERIES 320 NIPPLE TO BSPT MALE 0.5 metre length

PART NUMBER	mm	ins	BSPT	bar
H-GP06L320	6.0	1/4	1/4	20
H-GP08L320	8.0	5/16	1/4	20
H-GP10L320	10.0	3/8	3/8	20
H-GP13L320	12.5	1/2	1/2	20

You may also need ...

Master Pneumatics
air preparation
products



... on pages 116 – 144, section 3

PNEUMATIC – 320 eSAFE MULTI-LINK SYSTEM

DESCRIPTION

With multiple outlets, Series 320 eSafe Multi-Link offers both flexibility and high performance. Available in 1 to 4 outlet units. A small unit can be expanded with extensions to create a larger unit with up to four outlets. Separate units can be easily connected. Combine with CEJN polyurethane hose and FRL units to create a safe and flexible high performance air distribution system. eSafe complies with ISO Standard 4414 and EN 983 and it offers standard features; one hand operated, high flow and long service life.

FEATURES

- Compact multiple outlets
- Outlets adjustable up to 180°

BENEFITS

- No assembly necessary
- Safety function to reduce noise and prevent recoil accidents

SPECIFICATIONS

Nominal flow diameter	7.6 mm (5/16")
Max. working pressure	16 bar (232 psi)
Min. burst pressure	64 bar (928 psi)
Temperature range	-20°C to +100°C (-4°F to +212°F)
Material	Zinc plated steel / zinc
Media	Compressed air, neutral gas
Connection	1/2" BSPP female thread

Single Shut-off

CEJN MULTI-LINK
eSAFE SERIES 320

246

PART NUMBER	CONNECTION	NO. OF OUTLETS
C199029200	1/2" BSPP	Extension unit
C199029201	1/2" BSPP	1
C199029202	1/2" BSPP	2
C199029203	1/2" BSPP	3
C199029204	1/2" BSPP	4
C199029205	1/2" BSPP	5

PNEUMATIC – FEMALE ADAPTOR MULTI-LINK SYSTEM

DESCRIPTION

With multiple outlets, female adaptor Multi-Link offers both flexibility and high performance. Available in 1 to 5 outlet units with threaded 1/2" outlets. A small unit can be expanded with extensions to create a larger unit with up to four outlets. Separate units can be easily connected. Combine with CEJN polyurethane hose and FRL units to create a flexible high performance air distribution system.

FEATURES

- Compact multiple outlets
- Ready-made units, no assembly necessary
- Outlets adjustable up to 180°

SPECIFICATIONS

Nominal flow diameter	10 mm (7/32")
Max. working pressure	12 bar (174 psi)
Min. burst pressure	48 bar (696 psi)
Temperature range	-20°C to +100°C (-4°F to +212°F)
Material	Zinc plated steel / zinc
Media	Compressed air, neutral gas
Connection	1/2" BSPP female thread

CEJN MULTI-LINK
FEMALE ADAPTOR

246

PART NUMBER	CONNECTION	NO. OF OUTLETS
C199029990	1/2" BSPP	Extension unit
C199029991	1/2" BSPP	1
C199029992	1/2" BSPP	2
C199029993	1/2" BSPP	3
C199029994	1/2" BSPP	4
C199029995	1/2" BSPP	5

SOFT-LINE COVERS & ASSEMBLY TOOL

DESCRIPTION

Three accessories are included in the Soft-Line range: accessory covers, assembly tool and kink protectors. The accessory covers are designed to be added onto couplings to "soften" the edges of quick connect couplings, making them non-abrasive and less likely to cause damage to surrounding components and surfaces. Additionally, the covers also protect couplings from impact, thus prolonging their service life. The covers can be fitted on any regular series 300, 310, 315, 320, 326, 410 and 430 coupling. An assembly tool is delivered with the covers but can also be ordered separately. Kink-protectors can be used on all Stream-Line connections with the corresponding hose size. Kink protectors are sold separately and can be replaced during use with the cap nut on the Stream-Line connection.

New
AdditionsCEJN SOFT-LINE COVERS
10 PER PACK

240

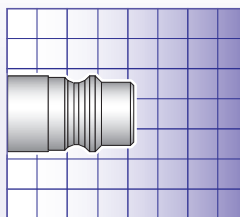
New
AdditionsCEJN ASSEMBLY TOOL
ASSEMBLY TOOL

240

PART NUMBER	FOR USE WITH
C199007001	CEJN Series 300, 310, 315, 320, 326
C199007002	CEJN Series 410, 430

PART NUMBER	FOR USE WITH
C199007051	CEJN Series 300, 310, 315, 320, 326
C199007053	CEJN Series 550

FEATURES	BENEFITS
<ul style="list-style-type: none"> Vented safety function Extremely high flow capacity Compact design Pre-applied sealant on male threads Smaller outside dimension than comparable designs 	<ul style="list-style-type: none"> Easy to handle One hand operation Fully automatic operation Extremely energy efficient
SPECIFICATIONS	
Nominal flow diameter	7.6 mm (5/16")
Flow capacity	1800 l/min (63.5 CFM)*
Max. working pressure	16 bar (232 psi)
Min. burst pressure	140 bar (2030 psi)
Connection force	86 N
Temperature range	-20°C to +100°C (-4°F to +212°F)
Coupling material	Hardened stainless steel (AISI 316)
Coupling seal material	Nitrile
Nipple material	Stainless steel (AISI 316)



Not actual size

Single Shut-off



*High Flow capacity

*Flow capacity measured at 6 bar (87 psi) inlet pressure and pressure drop at 0.5 bar (7 psi).

eSAFE VENTED SAFETY COUPLINGS

STANDARD NIPPLES

CEJN SERIES 326 HOSE BARB



410

PART NUMBER	CONNECTION
C103262004	10 mm

CEJN SERIES 326 HOSE BARB



410

PART NUMBER	CONNECTION
C103265002	6.3 mm 1/4"
C103265003	8 mm 5/16"
C103265004	10 mm 3/8"

CEJN SERIES 326 MALE THREAD



410

PART NUMBER	CONNECTION
C103262152	1/4" BSPT
C103262452	1/4" NPT
C103262154	3/8" BSPT
C103262155	1/2" BSPT

CEJN SERIES 326 MALE THREAD



410

PART NUMBER	CONNECTION
C103265152	1/4" BSPT
C103265154	3/8" BSPT

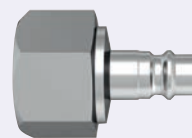
CEJN SERIES 326 FEMALE THREAD



410

PART NUMBER	CONNECTION
C103262202	1/4" BSPP
C103262402	1/4" NPT
C103262204	3/8" BSPP
C103262205	1/2" BSPP

CEJN SERIES 326 FEMALE THREAD – UNVALVED



410

PART NUMBER	CONNECTION
C103265202	1/4" BSPP
C103265204	3/8" BSPP
C103265205	1/2" BSPP

CEJN SERIES 326 STREAM-LINE CONNECTION



410

PART NUMBER	CONNECTION
C103262062	8 x 12 mm

CEJN SERIES 326 STREAM-LINE CONNECTION



410

PART NUMBER	CONNECTION
C103265062	8 x 12 mm

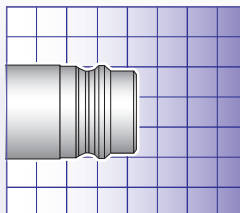


PNEUMATIC – 410 eSAFE SERIES



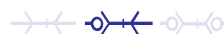
FEATURES	BENEFITS
<ul style="list-style-type: none"> Extremely high flow capacity Compact design 	<ul style="list-style-type: none"> Fast, easy, one hand operation High performance Strong and durable for long life
SPECIFICATIONS	
Nominal flow diameter	10.4 mm (13/32")
Air flow	4000 l/min (141.2 CFM)
Max. working pressure	16 bar (232 psi)
Min. burst pressure	140 bar (2030 psi)
Temperature range	-20°C to +100°C (-4°F to +212°F)
Coupling material	Zinc plated steel / brass
Nipple material	Hardened zinc plated steel
Connection force	140 N

NPT Threads are available



Not actual size

Single Shut-off



Interchange

CEJN Original,
Eurostandard

*Flow capacity measured at 6 bar (87 psi) inlet pressure and pressure drop at 0.5 bar (7 psi).

eSAFE VENTED SAFETY COUPLINGS



CEJN SERIES 410 HOSE CONNECTION



246

PART NUMBER	CONNECTION
C104102003	8 mm 5/16"
C104102004	10 mm 3/8"
C104102005	13 mm 1/2"
C104102006	16 mm 5/8"
C104102007	19 mm 3/4"



CEJN SERIES 410 STREAM-LINE CONNECTION



246

PART NUMBER	CONNECTION
C104102066	11.0 x 16.0 mm
C104102068	13.0 x 18.0 mm
C104102071	16.0 x 21.0 mm
C104102074	19.0 x 24.0 mm

CEJN SERIES 410 MALE THREAD



246

PART NUMBER	CONNECTION
C104102154	3/8" BSPT
C104102155	1/2" BSPT
C104102157	3/4" BSPT



CEJN SERIES 410 SOFT-LINE CONNECTION



246

PART NUMBER	CONNECTION
C104102085	11 x 16 mm
C104102088	13 x 18 mm

CEJN SERIES 410 FEMALE THREAD



246

PART NUMBER	CONNECTION
C104102204	3/8" BSPP
C104102205	1/2" BSPP
C104102207	3/4" BSPP

You may also need ...

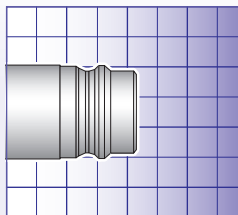
Air tools



... on pages 1006 – 1009, section 20

FEATURES	BENEFITS
<ul style="list-style-type: none"> Extremely high flow capacity Compact design 	<ul style="list-style-type: none"> Fast, easy, one hand operation High performance Strong and durable for long life
SPECIFICATIONS	
Nominal flow diameter	10.4 mm (13/32")
Air flow	4000 l/min (141.2 CFM)
Max. working pressure	16 bar (232 psi)
Min. burst pressure	140 bar (2030 psi)
Temperature range	-20°C to +100°C (-4°F to +212°F)
Coupling material	Zinc plated steel / brass
Nipple material	Hardened zinc plated steel
Connection force	140 N

NPT Threads are available



Not actual size

Single Shut-off
Interchange
CEJN Original, Eurostandard

*Flow capacity measured at 6 bar (87 psi) inlet pressure and pressure drop at 0.5 bar (7 psi).

STANDARD NIPPLES

CEJN SERIES 410 HOSE BARB



255

PART NUMBER	CONNECTION
C104105002	6 mm 1/4"
C104105003	8 mm 5/16"
C104105004	10 mm 3/8"
C104105005	13 mm 1/2"
C104105006	16 mm 5/8"
C104105007	19 mm 3/4"

CEJN SERIES 410 MALE THREAD with Loctite Dry-Seal®



255

PART NUMBER	CONNECTION
C104105152	1/4" BSPT
C104105154	3/8" BSPT
C104105155	1/2" BSPT
C104105157	3/4" BSPT

CEJN SERIES 410 FEMALE THREAD



255

PART NUMBER	CONNECTION
C104105202	1/4" BSPP
C104105204	3/8" BSPP
C104105205	1/2" BSPP
C104105207	3/4" BSPP



CEJN SERIES 410 STREAM-LINE CONNECTION



255

PART NUMBER	CONNECTION
C104105066	11 x 16 mm
C104105068	13 x 18 mm
C104105071	16 x 21 mm
C104105074	19 x 24 mm

HOSE WHIP ASSEMBLIES

CEJN SERIES 410 NIPPLE TO BSPT MALE 0.5 metre length



1350

PART NUMBER	mm	ins	BSPT	bar
H-GP13L410	12.5	1/2	1/2	20
H-GP19L410	19.0	3/4	3/4	20

You may also need ...

BondLoc
pipe sealant

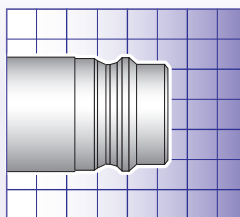


... on page 1049, section 21



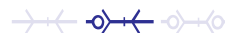
FEATURES	BENEFITS
<ul style="list-style-type: none"> Vented safety function Extremely high flow capacity Durable and robust for tough environments 	<ul style="list-style-type: none"> Easy to handle One hand operation Built-in safety function to avoid pneumatic recoil
SPECIFICATIONS	
Nominal flow diameter	10.4 mm (13/32")
Flow capacity	4000 l/min (141.2 CFM)*
Max. working pressure	16 bar (232 psi)
Min. burst pressure	140 bar (2030 psi)
Temperature range	-20°C to +100°C (-4°F to +212°F)
Coupling material	Hardened stainless steel (AISI 316)
Nipple material	Stainless steel (AISI 316)
Connection force	140 N

NPT threads are available



Not actual size

Single Shut-off



*Flow capacity measured at 6 bar (87 psi) inlet pressure and pressure drop at 0.5 bar (7 psi).

eSAFE VENTED SAFETY COUPLINGS

CEJN SERIES 416 HOSE BARB



246

PART NUMBER	CONNECTION
C104162005	13 mm 1/2"
C104162007	19 mm 3/4"

STANDARD NIPPLES

CEJN SERIES 416 HOSE BARB



260

PART NUMBER	CONNECTION
C104165004	10 mm 3/8"
C104165005	13 mm 1/2"
C104165007	19 mm 3/4"

CEJN SERIES 416 MALE THREAD



246

PART NUMBER	CONNECTION
C104162155	1/2" BSPT
C104162157	3/4" BSPT
C104162255	1/2" BSPP
C104162257	3/4" BSPP

CEJN SERIES 416 MALE THREAD



260

PART NUMBER	CONNECTION
C104165254	3/8" BSPP
C104165155	1/2" BSPT
C104165255	1/2" BSPP
C104165257	3/4" BSPP

CEJN SERIES 416 FEMALE THREAD



246

PART NUMBER	CONNECTION
C104162204	3/8" BSPP
C104162205	1/2" BSPP

CEJN SERIES 416 FEMALE THREAD



260

PART NUMBER	CONNECTION
C104165204	3/8" BSPP
C104165207	3/4" BSPP

CEJN SERIES 416 STREAM-LINE CONNECTION



246

PART NUMBER	CONNECTION
C104162066	11 x 16 mm

CEJN SERIES 416 STREAM-LINE CONNECTION

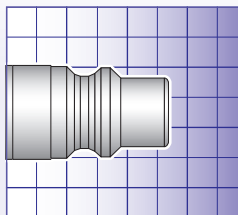


260

PART NUMBER	CONNECTION
C104165066	11 x 16 mm

FEATURES	BENEFITS
<ul style="list-style-type: none"> Vented safety function Extremely high flow capacity Compact design Smaller outside dimension than comparable designs 	<ul style="list-style-type: none"> Easy to handle One hand operation Fully automatic operation
SPECIFICATIONS	
Nominal flow diameter	8.2 mm (5/16")
Flow capacity	2500 l/min (88.3 CFM)*
Max. working pressure	16 bar (232 psi)
Min. burst pressure	140 bar (2030 psi)
Temperature range	-20°C to +100°C (-4°F to +212°F)
Coupling material	Zinc plated steel / brass
Coupling seal material	Nitrile
Nipple material	Hardened zinc plated steel
Connection force	132 N

NPT threads are available



Not actual size

*Flow capacity measured at 6 bar (87 psi) inlet pressure and pressure drop at 0.5 bar (7 psi).

eSafe is a one hand operated safety coupling that vents before disconnection, eliminating the risk of hose whip. The couplings have a smaller outside dimension than comparable designs. Full automatic operation ensures easy handling. eSafe complies with ISO Standard 4414 and EN 983.

Single Shut-off



Interchange

A-A 59439 (former US Standard MIL C 4109 3/8"), ISO 6150 B, Rectus 30

eSAFE VENTED SAFETY COUPLINGS



CEJN SERIES 430 HOSE BARB



246

PART NUMBER	CONNECTION
C104302003	8 mm 5/16"
C104302004	10 mm 3/8"
C104302005	13 mm 1/2"
C104302006	16 mm 5/8"
C104302007	19 mm 3/4"

CEJN SERIES 430 MALE THREAD



246

PART NUMBER	CONNECTION
C104302154	3/8" BSPT
C104302155	1/2" BSPT
C104302157	3/4" BSPT

CEJN SERIES 430 FEMALE THREAD



246

PART NUMBER	CONNECTION
C104302204	3/8" BSPP
C104302205	1/2" BSPP
C104302207	3/4" BSPP

CEJN SERIES 430 STREAM-LINE CONNECTION



246

PART NUMBER	CONNECTION
C104302066	11 x 16 mm



CEJN SERIES 430 SOFT-LINE CONNECTION



246

PART NUMBER	CONNECTION
C104302080	6.5 x 10 mm
C104302082	8.0 x 12 mm
C104302085	11.0 x 16 mm
C104302088	13.0 x 18 mm

STANDARD NIPPLES

CEJN SERIES 430 HOSE BARB



260

PART NUMBER	CONNECTION
C104305002	6 mm 1/4"
C104305003	8 mm 5/16"
C104305004	10 mm 3/8"
C104305005	13 mm 1/2"
C104305006	16 mm 5/8"

CEJN SERIES 430 MALE THREAD



260

PART NUMBER	CONNECTION
C104305152	1/4" BSPT
C104305154	3/8" BSPT
C104305155	1/2" BSPT
C104305157	3/4" BSPT

CEJN SERIES 430 FEMALE THREAD



260

PART NUMBER	CONNECTION
C104305202	1/4" BSPP
C104305204	3/8" BSPP
C104305205	1/2" BSPP
C104305207	3/4" BSPP

CEJN SERIES 430 STREAM-LINE CONNECTION



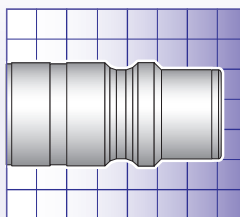
260

PART NUMBER	CONNECTION
C104305066	11 x 16 mm



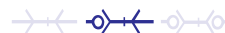
FEATURES	BENEFITS
<ul style="list-style-type: none"> Vented safety function Extremely high flow capacity Compact design Smaller outside dimension than comparable designs 	<ul style="list-style-type: none"> Easy to handle One hand operation Fully automatic operation
SPECIFICATIONS	
Nominal flow diameter	11 mm (7/16")
Flow capacity	4050 l/min (143.0 CFM)
Max. working pressure	16 bar (232 psi)
Min. burst pressure	140 bar (2030 psi)
Temperature range	-20°C to +100°C (-4°F to +212°F)
Coupling material	Zinc plated steel / brass
Coupling seal material	Nitrile
Nipple material	Hardened zinc plated steel
Connection force	152 N

NPT threads are available



Not actual size

Single Shut-off



Interchange

A-A 59439 (former US Standard MIL C 4109 1/2")
ISO 6150 B

*Flow capacity measured at 6 bar (87 psi) inlet pressure and pressure drop at 0.5 bar (7 psi).

eSafe is a one hand operated safety coupling that vents before disconnection, eliminating the risk of hose whip. Male threads on the couplings and nipples feature pre-applied thread sealant. The couplings have a smaller outside dimension than comparable designs. Full automatic operation ensures easy handling. eSafe complies with ISO Standard 4414 and EN 983.

eSAFE VENTED SAFETY COUPLINGS

CEJN SERIES 550 HOSE BARB



246

PART NUMBER	CONNECTION
C105502004	10 mm 3/8"
C105502005	13 mm 1/2"
C105502007	19 mm 3/4"

CEJN SERIES 550 MALE THREAD



246

PART NUMBER	CONNECTION
C105502154	3/8" BSPT
C105502155	1/2" BSPT
C105502157	3/4" BSPT

CEJN SERIES 550 FEMALE THREAD



246

PART NUMBER	CONNECTION
C105502204	3/8" BSPP
C105502205	1/2" BSPP
C105502207	3/4" BSPP



CEJN SERIES 550 STREAM-LINE CONNECTION



246

PART NUMBER	CONNECTION
C105502066	11 x 16 mm



CEJN SERIES 550 SOFT-LINE CONNECTION



246

PART NUMBER	CONNECTION
C105502080	6.5 x 10 mm
C105502082	8.0 x 12 mm
C105502088	13.0 x 18 mm

STANDARD NIPPLES

CEJN SERIES 550 HOSE BARB



265

PART NUMBER	CONNECTION
C105505004	10 mm 3/8"
C105505005	13 mm 1/2"
C105505007	19 mm 3/4"

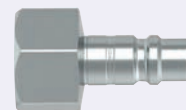
CEJN SERIES 550 MALE THREAD



265

PART NUMBER	CONNECTION
C105505152	1/4" BSPT
C105505154	3/8" BSPT
C105505155	1/2" BSPT
C105505157	3/4" BSPT

CEJN SERIES 550 FEMALE THREAD

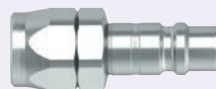


265

PART NUMBER	CONNECTION
C105505204	3/8" BSPP
C105505205	1/2" BSPP



CEJN SERIES 550 STREAM-LINE CONNECTION



265

PART NUMBER	CONNECTION
C105505066	11 x 16 mm

STREAM-LINE ADAPTORS AND ACCESSORIES

CEJN SERIES 958 SWIVEL MALE STREAM-LINE ADAPTOR



285

PART NUMBER	CONNECTION	HOSE ID X OD
C199580877	1/4" BSPT	5.0 x 8.0 mm
C199581077	1/4" BSPT	6.5 x 10.0 mm
C199581277	1/4" BSPT	8.0 x 12.0 mm
C199581279	3/8" BSPT	8.0 x 12.0 mm
C199581377	1/4" BSPT	9.5 x 13.5 mm
C199581379	3/8" BSPT	9.5 x 13.5 mm
C199581687	1/2" BSPT	11.0 x 16.0 mm

CEJN SERIES 958 MALE STREAM-LINE ADAPTOR



285

PART NUMBER	CONNECTION	HOSE ID X OD
C199580812	1/4" BSPT	5.0 x 8.0 mm
C199581012	1/4" BSPT	6.5 x 10.0 mm
C199581212	1/4" BSPT	8.0 x 12.0 mm
C199581214	3/8" BSPT	8.0 x 12.0 mm
C199581312	1/4" BSPT	9.5 x 13.5 mm
C199581314	3/8" BSPT	9.5 x 13.5 mm
C199581615	1/2" BSPT	11.0 x 16.0 mm

DESCRIPTION

Kink protectors can be used on all Stream-Line couplings and nipples with the corresponding hose size. Kink protectors are sold separately and can be replaced during use with the cap nut on the Stream-Line connection.

CEJN SERIES 300 KINK PROTECTOR



285

PART NUMBER	HOSE ID X OD
C103004012	8.0 x 12.0 mm

SPIRAL ANTI-SPARK POLYURETHANE TUBE

SUITABILITY

- Welding environments
- Assembly lines, fixed workplaces
- Breathing air applications

FEATURES / BENEFITS

- Low friction
- Spark and scorch resistant
- Excellent resistance to oils, solvents and other non-aqueous solutions
- Long service life with outstanding ageing qualities
- Excellent recoil ability

SPECIFICATIONS

Temperature range	-30°C to +60°C
Pressure rating	Values given are based on the short term burst pressure of CEJN spiral anti-spark hose at 20°C using a 3:1 safety factor. NOTE: Any increase in temperature above 20°C will result in a decline in the working pressure values.
Construction	Ester based polyurethane.
Applicable standards	EN14594:2005 when used with approved breathing air filters.



CEJN – SPIRAL 3 3/8" MANDREL SIZE



285

PART NUMBER	mm	mm	mtrs	bar
C199584020	6.5	10.0	2	10
C199584040	6.5	10.0	4	10
C199584060	6.5	10.0	6	10
C199584080	6.5	10.0	8	10

4 1/4" MANDREL SIZE

C199584220	8.0	12.0	2	10
C199584240	8.0	12.0	4	10
C199584260	8.0	12.0	6	10
C199584280	8.0	12.0	8	10

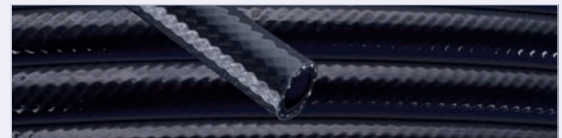
STRAIGHT BRAIDED ANTI-SPARK PUR HOSE

FEATURES

- Spark and scorch resistant
- Excellent resistance to oils, solvents, and other non-aqueous solutions
- Long service life with outstanding aging qualities
- Light and flexible
- High impact strength, as well as high tensile and tear strength

SPECIFICATIONS

Temperature range	-30°C to +60°C
Construction	Ester based polyurethane reinforced with polyester fibre



STRAIGHT BRAIDED ANTI-SPARK PUR HOSE 50 METRE COILS



285

PART NUMBER	mm	mm	bar
C199581230	8.0	12.0	14
C199581330	9.5	13.5	12
C199581637	11.0	16.0	12



SPIRAL POLYURETHANE TUBE

SUITABILITY

- Compressed Air

FEATURES / BENEFITS

- Light and flexible
- Low friction
- Excellent resistance to oil, solvent and other non-aqueous solutions
- Excellent recoil ability and crimp resistance
- Long service life with outstanding ageing qualities
- Excellent abrasion resistance

SPECIFICATIONS

Temperature range	-30°C to +60°C
Pressure rating	Values given are based on the short term burst pressure of CEJN Spiral hose at 20°C using a 3:1 safety factor. NOTE: Any increase in temperature above 20°C will result in a decline in the working pressure values.
Construction	Ester based, non-braided polyurethane.

CEJN SPIRAL – BLUE
42 CM MANDREL SIZE

285

PART NUMBER	mm	mm	mtrs	bar
C19958B5820	5.0	8.0	2	10
C19958B5840	5.0	8.0	4	10
C19958B5860	5.0	8.0	6	10
C19958B5880	5.0	8.0	8	10

52 CM MANDREL SIZE

C19958B6020	6.5	10.0	2	10
C19958B6040	6.5	10.0	4	10
C19958B6060	6.5	10.0	6	10
C19958B6080	6.5	10.0	8	10

CEJN SPIRAL – BLUE
65 CM MANDREL SIZE

285

PART NUMBER	mm	mm	mtrs	bar
C19958B6220	8.0	12.0	2	10
C19958B6240	8.0	12.0	4	10
C19958B6260	8.0	12.0	6	10
C19958B6280	8.0	12.0	8	10

95 CM MANDREL SIZE

C19958B6620	11.0	16.0	2	10
C19958B6640	11.0	16.0	4	10
C19958B6660	11.0	16.0	6	10
C19958B6680	11.0	16.0	8	10

PUR HOSE KITS

SUITABILITY

- Compressed Air

FEATURES / BENEFITS

- Light and flexible
- Low friction hose
- Excellent resistance to oil, solvent and other non-aqueous solutions
- Excellent recoil ability and crimp resistance
- Long service life with outstanding ageing qualities
- Excellent abrasion resistance
- Also available in 300, 310, 315, 320 & 410 series

SPECIFICATIONS

Temperature range	-30°C to +60°C
Pressure rating	Values given are based on the short term burst pressure of CEJN PUR hose at 20°C using a 3:1 safety factor. NOTE: Any increase in temperature above 20°C will result in a decline in the working pressure values.
Construction	Spiral PUR. Ester based, non braided polyurethane. Assembled with Stream-Line couplings, nipples and swivels.

Made to order

CEJN PUR HOSE KITS – BLUE
SPIRAL HOSE WITH
BSPT FIXED ADAPTORS

285

PART NUMBER	mm	mm	mtrs	bar	BSPT
C199589325	5.0	8	2	16	1/4
C199589987	6.5	10	2	16	1/4
C199589988	6.5	10	4	16	1/4
C199589805	8.0	12	4	16	3/8
C199589885	11.0	16	4	16	1/2
C199589955	6.5	10	6	16	1/4
C199589804	8.0	12	6	16	3/8
C199589801	8.0	12	8	16	3/8
C199589862	11.0	16	8	16	1/2

Made to order

CEJN PUR HOSE KITS – BLUE
SPIRAL HOSE WITH
BSPT SWIVEL ADAPTORS

285

PART NUMBER	mm	mm	mtrs	bar	BSPT
C199589978	5.0	8	2	16	1/4
C199589947	6.5	10	2	16	1/4
C199589997	8.0	12	2	16	3/8
C199589965	5.0	8	4	16	1/4
C199589949	6.5	10	4	16	1/4
C199589967	8.0	12	4	16	3/8
C199589810	11.0	16	4	16	1/2
C199589954	6.5	10	6	16	1/4
C199589998	8.0	12	6	16	3/8
C199589957	6.5	10	8	16	1/4
C199589809	8.0	12	8	16	3/8
C199589346	11.0	16	8	16	1/2

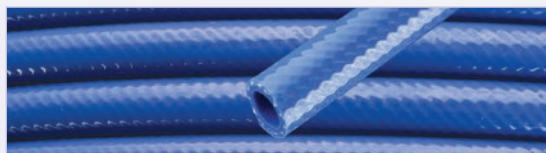
STRAIGHT BRAIDED PUR HOSE

FEATURES

- Light and flexible
- Excellent resistance to oil, solvents, and other non-aqueous solutions
- Long service life with outstanding ageing qualities
- For applications requiring a maximum working pressure up to 16 bar (232 psi)
- Offers a wide temperature range and high tensile, tear, and impact strength
- The hose easily springs back to its original form and has excellent abrasion resistance

SPECIFICATIONS

Temperature range	-30°C to +60°C
Construction	Ester based polyurethane reinforced with polyester fibre



STRAIGHT BRAIDED PUR HOSE 100 METRE COILS

285

PART NUMBER	mm	mm	bar
C199581000	6.5	10.0	16
C199581200	8.0	12.0	16
C199581350	9.5	13.5	16
C199581600	11.0	16.0	12

STRAIGHT BRAIDED PUR HOSE 50 METRE COILS

285

PART NUMBER	mm	mm	bar
C199581020	6.5	10.0	16
C199581220	8.0	12.0	16
C199581370	9.5	13.5	16
C199581638	11.0	16.0	12
C199582100	16.0	21.0	10
C199582400	19.0	24.0	10

STRAIGHT BRAIDED HI-VIS PUR HOSE



FEATURES

- High visibility colour to prevent tripping accidents and injuries
- Light and flexible
- Excellent resistance to oil, solvents, and other non-aqueous solutions
- Long service life with outstanding ageing qualities
- For applications requiring a maximum working pressure up to 16 bar (232 psi)
- Offers a wide temperature range and high tensile, tear and impact strength
- The hose easily springs back to its original form and has excellent abrasion resistance

SPECIFICATIONS

Temperature range	-30°C to +60°C
Construction	Ester based polyurethane reinforced with polyester fibre

STRAIGHT BRAIDED HI-VIS PUR HOSE 100 METRE COILS

285

PART NUMBER	mm	mm	bar
C199581288	8.0	12.0	16
C199581388	9.5	13.5	16

50 METRE COILS

C199581688	11.0	16.0	12
C199581888	13.0	18.0	10

STRAIGHT BRAIDED HI-VIS PUR HOSE WITH 320 eSAFE FITTINGS 10 METRE COILS

285

PART NUMBER	mm	mm	bar
C199582088	8.0	12.0	16

14 METRE COILS

C199582168	9.5	13.5	12
------------	-----	------	----

STRAIGHT BRAIDED HI-VIS PUR HOSE WITH 1/4" BSPT FITTINGS 10 METRE COILS

285

PART NUMBER	mm	mm	bar
C199582028	8.0	12.0	16

WITH 3/8" BSPT FITTINGS

C199582138	9.5	13.5	12
------------	-----	------	----

STRAIGHT NON-BRAIDED PUR HOSE

FEATURES

- Light and flexible
- Excellent resistance to oil, solvents, and other non-aqueous solutions
- Long service life with outstanding ageing qualities
- For applications requiring a maximum working pressure up to 10 bar (145 psi)
- Offers a high tensile, tear, and impact strength
- The hose easily springs back to its original form

SPECIFICATIONS




Temperature range	-30°C to +60°C
Construction	FDA approved ester based polyurethane

Supplied in full coils only



STRAIGHT
NON-BRAIDED
PUR HOSE
50 METRE COILS

285

PART NUMBER			
C199580702	4.0	6.0	10
C199580802	5.0	8.0	10
C199581002	6.5	10.0	10
C199581202	8.0	12.0	10
C199581602	11.0	16.0	10

STRAIGHT BRAIDED WATER PUR HOSE

FEATURES

- Light and flexible
- Excellent resistance to oils, solvents, and both aqueous and non-aqueous solutions
- Long service life with outstanding aging qualities
- High impact strength and is functional in a wide temperature range
- Hose easily springs back to its original form
- Excellent abrasion resistance

SPECIFICATIONS




Temperature range	-30°C to +60°C
Construction	Ether based PUR reinforced with polyester fibre

Supplied in full coils only



STRAIGHT BRAIDED
WATER PUR HOSE
50 METRE COILS

285

PART NUMBER			
C199581240	8.0	12.0	10
C199581640	11.0	16.0	10

STRAIGHT BRAIDED ANTISTATIC EPDM RUBBER HOSE

FEATURES

- Dissipates electro-static discharge and minimises errant sparks
- Excellent weather resistance
- Extreme flexibility
- Electrically conductive

SPECIFICATIONS




Temperature range	-30°C to +60°C
Construction	Braided EPDM rubber

Supplied in full coils only



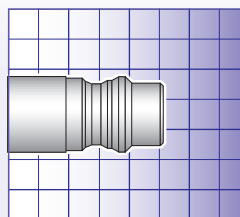
STRAIGHT BRAIDED
ANTISTATIC EPDM
RUBBER HOSE
40 METRE COILS

285

PART NUMBER			
C199009920	8.0	15.0	12
C199009918	10.0	17.5	12
C199009921	12.0	19.5	12

FEATURES	BENEFITS
<ul style="list-style-type: none"> • One hand operation to connect • Two hand operation to disconnect • Extremely high airflow rate • Grip friendly locking sleeve 	<ul style="list-style-type: none"> • Prevents unintentional disconnection • Perfect for use in damp / wet and corrosive environments
SPECIFICATIONS	
Nominal flow diameter	7.4 mm (9/32")
Flow capacity	1950 l/min (68.8 CFM)*
Max. working pressure	35 bar (507 psi)
Min. burst pressure	140 bar (2030 psi)
Temperature range	-30°C to +100°C (-22°F to +212°F)
Coupling material	Nickel plated brass
Nipple material	Nickel plated brass

NPT Threads are available



Not actual size

Single Shut-off



*Flow capacity measured at 6 bar (87 psi) inlet pressure and pressure drop at 0.5 bar (7 psi).

COUPLINGS

New Additions

CEJN SERIES 341 HOSE BARB



500

PART NUMBER	CONNECTION
C103411034	8 mm 5/16"
C103411004	10 mm 3/8"

New Additions

CEJN SERIES 341 HOSE BARB



500

PART NUMBER	CONNECTION
C103415002	6 mm 1/4"
C103415003	8 mm 5/16"
C103415004	10 mm 3/8"

CEJN SERIES 341 MALE THREAD with Loctite Dry-Seal®



500

PART NUMBER	CONNECTION
C103411152	1/4" BSPT
C103411154	3/8" BSPT
C103411155	1/2" BSPT

CEJN SERIES 341 MALE THREAD



500

PART NUMBER	CONNECTION
C103415152	1/4" BSPT
C103415154	3/8" BSPT
C103415155	1/2" BSPT

New Additions

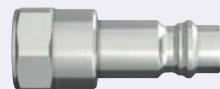
CEJN SERIES 341 FEMALE THREAD



500

PART NUMBER	CONNECTION
C103411202	1/4" BSPP
C103411204	3/8" BSPP
C103411205	1/2" BSPP

CEJN SERIES 341 FEMALE THREAD



500

PART NUMBER	CONNECTION
C103415202	1/4" BSPP
C103415204	3/8" BSPP
C103415205	1/2" BSPP

You may also need ...

Breathing air hose

Copely Codeflex breathing air hose



... on page 502, section 10

Tricoflex Nobelair® AS/R reinforced PVC breathing air hose



... and page 505, section 10

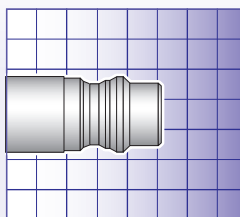


BREATHING AIR – 342 SERIES



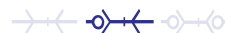
FEATURES	BENEFITS
<ul style="list-style-type: none"> • Locking sleeve made of hardened zinc plated steel • Automatic safety locking feature • One hand operation to connect • Two hand operation to disconnect • Pre applied sealant on male threads 	<ul style="list-style-type: none"> • Extremely durable • Prevents unintentional disconnection
SPECIFICATIONS	
Nominal flow diameter	7.4 mm (9/32")
Flow capacity	1950 l/min (68.8 CFM)*
Max. working pressure	35 bar (507 psi)
Min. burst pressure	140 bar (2030 psi)
Temperature range	-30°C to +100°C (-22°F to +212°F)
Coupling material	Zinc plated steel / brass
Nipple material	Hardened zinc plated steel
Connection force	103.0 N

NPT threads are available



Not actual size

Single Shut-off



Interchange

Series 96

*Flow capacity measured at 6 bar (87 psi) inlet pressure and pressure drop at 0.5 bar (7 psi).

COUPLINGS

CEJN SERIES 342 HOSE BARB



500

PART NUMBER	CONNECTION
C103421002	6 mm 1/4"
C103421003	8 mm 5/16"
C103421004	10 mm 3/8"
C103421005	13 mm 1/2"

CEJN SERIES 342 MALE THREAD with Loctite Dry-Seal®



500

PART NUMBER	CONNECTION
C103421152	1/4" BSPT
C103421154	3/8" BSPT
C103421155	1/2" BSPT

CEJN SERIES 342 FEMALE THREAD



500

PART NUMBER	CONNECTION
C103421202	1/4" BSPP
C103421204	3/8" BSPP
C103421205	1/2" BSPP

NIPPLES

CEJN SERIES 342 HOSE BARB



500

PART NUMBER	CONNECTION
C103425002	6 mm 1/4"
C103425004	10 mm 3/8"
C103425005	13 mm 1/2"

CEJN SERIES 342 MALE THREAD



500

PART NUMBER	CONNECTION
C103425152	1/4" BSPT
C103425154	3/8" BSPT
C103425155	1/2" BSPT

New
Additions

CEJN SERIES 342 FEMALE THREAD



500

PART NUMBER	CONNECTION
C103425202	1/4" BSPP
C103425204	3/8" BSPP
C103425205	1/2" BSPP

New

CEJN SERIES 342 STREAM-LINE CONNECTION



500

PART NUMBER	CONNECTION
C103421060	6.5 x 10 mm

CEJN SERIES 342 STREAM-LINE CONNECTION

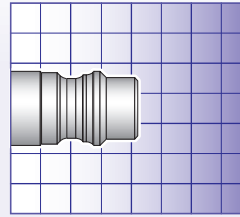


500

PART NUMBER	CONNECTION
C103425060	6.5 x 10 mm
C103425062	8 x 12 mm

FEATURES	BENEFITS
<ul style="list-style-type: none"> • One hand operation to connect • Two hand operation to disconnect • Extremely high airflow rate • Shorter design – lower weight • Grip friendly locking sleeve • Pre applied sealant on male threads 	<ul style="list-style-type: none"> • Prevents unintentional disconnection • Suitable for breathing air firefighting applications and diving equipment
SPECIFICATIONS	
Nominal flow diameter	7.4 mm (9/32")
Flow capacity	1950 l/min (68.8 CFM)*
Max. working pressure	35 bar (507 psi)
Min. burst pressure	140 bar (2030 psi)
Temperature range	-30°C to +100°C (-22°F to +212°F)
Coupling material	Nickel plated brass
Nipple material	Nickel plated brass
Nipple material – C103445022	Stainless steel

NPT threads are available



Not actual size

Single Shut-off



*Flow capacity measured at 6 bar (87 psi) inlet pressure and pressure drop at 0.5 bar (7 psi).

COUPLINGS

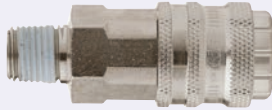
CEJN SERIES 344 HOSE BARB



500

PART NUMBER	CONNECTION
C103441002	6 mm 1/4"
C103441003	7 mm 5/16"
C103441004	10 mm 3/8"

CEJN SERIES 344 MALE THREAD with Loctite Dry-Seal®



500

PART NUMBER	CONNECTION
C103441152	1/4" BSPT
C103441154	3/8" BSPT
C103441288	1/4" BSPP

CEJN SERIES 344 FEMALE THREAD



500

PART NUMBER	CONNECTION
C103441202	1/4" BSPP
C103441204	3/8" BSPP

NIPPLES

CEJN SERIES 344 HOSE BARB – STAINLESS STEEL



500

PART NUMBER	CONNECTION
C103445022	7 mm

HOSE BARB – NICKEL PLATED

C103445023	7 mm
------------	------

CEJN SERIES 344 MALE THREAD



500

PART NUMBER	CONNECTION
C103445252	1/4" BSPP

CEJN SERIES 344 FEMALE THREAD



500

PART NUMBER	CONNECTION
C103445202	1/4" BSPP
C103445204	3/8" BSPP

You may also need ...

Breathing air hose

Copely Codeflex breathing air hose



Tricoflex Nobelair® AS/R reinforced PVC breathing air hose



... on page 502, section 10

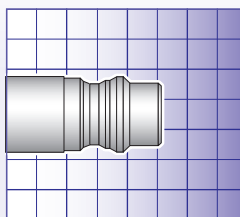
... and page 505, section 10



BREATHING AIR – 345 SERIES



FEATURES	BENEFITS
<ul style="list-style-type: none"> • One hand operation to connect • Two hand operation to disconnect • Extremely high airflow rate • Grip friendly locking sleeve 	<ul style="list-style-type: none"> • Prevents unintentional disconnection • Suitable for applications that demand a closed system when disconnected
SPECIFICATIONS	
Nominal flow diameter	6.2 mm (1/4")
Flow capacity	1100 l/min (38.8 CFM)*
Max. working pressure	35 bar (507 psi)
Min. burst pressure	140 bar (2030 psi)
Temperature range	-30°C to +100°C (-22°F to +212°F)
Coupling material	Nickel plated brass
Nipple material	Nickel plated brass



Not actual size

Double Shut-off



*Flow capacity measured at 6 bar (87 psi) inlet pressure and pressure drop at 0.5 bar (7 psi).

COUPLINGS

CEJN SERIES 345 HOSE BARB



500

PART NUMBER	CONNECTION
C103451004	10 mm 3/8"

CEJN SERIES 345 FEMALE THREAD



500

PART NUMBER	CONNECTION
C103451202	1/4" BSPP
C103451204	3/8" BSPP

NIPPLES

CEJN SERIES 345 MALE THREAD – VALVED



500

PART NUMBER	CONNECTION
C103456252	1/4" BSPP
C103456254	3/8" BSPP

New
Additions

CEJN SERIES 345 FEMALE THREAD – VALVED



500

PART NUMBER	CONNECTION
C103456202	1/4" BSPP
C103456204	3/8" BSPP

A selection of CEJN
product guides are
now available.

Please contact your
distributor for more
details.

You may also need ...

Breathing air hose

Codeflex breathing air hose



... on page 502, section 10

Nobelair® AS/R reinforced PVC breathing air hose



... and page 505, section 10



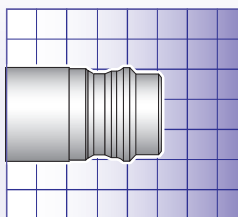
BREATHING AIR – 442 SERIES



One

FEATURES	BENEFITS
<ul style="list-style-type: none"> • Locking sleeve made of hardened zinc plated steel • Automatic safety locking feature • One hand operation to connect 	<ul style="list-style-type: none"> • Extremely durable • Prevents unintentional disconnection
SPECIFICATIONS	
Nominal flow diameter	10.4 mm (13/32")
Flow capacity	3950 l/min (139.4 CFM)*
Max. working pressure	35 bar (507 psi)
Min. burst pressure	140 bar (2030 psi)
Temperature range	-30°C to +100°C (-22°F to +212°F)
Coupling material	Zinc plated steel / brass
Nipple material	Hardened zinc plated steel

NPT threads are available



Not actual size

Single Shut-off



*Flow capacity measured at 6 bar (87 psi) inlet pressure and pressure drop at 0.5 bar (7 psi).

COUPLINGS

CEJN SERIES 442 HOSE BARB



500

PART NUMBER	CONNECTION
C104421004	10 mm 3/8"
C104421005	13 mm 1/2"
C104421006	16 mm 5/8"
C104421007	19 mm 3/4"

CEJN SERIES 442 MALE THREAD



500

PART NUMBER	CONNECTION
C104421154	3/8" BSPT
C104421155	1/2" BSPT
C104421157	3/4" BSPT

CEJN SERIES 442 FEMALE THREAD



500

PART NUMBER	CONNECTION
C104421204	3/8" BSPP
C104421205	1/2" BSPP
C104421207	3/4" BSPP

NIPPLES

CEJN SERIES 442 HOSE BARB



500

PART NUMBER	CONNECTION
C104425005	13 mm 1/2"
C104425006	16 mm 5/8"
C104425007	19 mm 3/4"

CEJN SERIES 442 MALE THREAD



500

PART NUMBER	CONNECTION
C104425152	1/4" BSPT
C104425154	3/8" BSPT
C104425155	1/2" BSPT
C104425157	3/4" BSPT

New
Additions

CEJN SERIES 442 FEMALE THREAD



500

PART NUMBER	CONNECTION
C104425204	3/8" BSPP
C104425205	1/2" BSPP
C104425207	3/4" BSPP

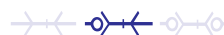


FEATURES	BENEFITS
• Steel, lightweight construction	• Simple one hand operation
SPECIFICATIONS	
Nominal flow diameter	5.0 mm (3/16")
Flow capacity	870 l/min (30.7 CFM)*
Max. working pressure	35 bar (508 psi)
Temperature range	-20°C to +100°C (-4°F to +212°F)
MATERIALS	
Coupling body	Nickel plated steel
Coupling back part	Nickel plated brass
Sleeve	Nickel plated steel
Valve	Brass
Springs, locking O-ring & balls	Stainless steel
Seals	Nitrile NBR
Nipple	Nickel plated steel

Interchange

Series 17

Single Shut-off



*Flow capacity measured at 6 bar (87 psi) inlet pressure and pressure drop at 0.5 bar (7 psi).

COUPLINGS

PARKAIR SERIES CP17
HOSE BARB

5611

PART NUMBER	CONNECTION
CP17-1002	6 mm 1/4"
CP17-1003	8 mm 5/16"
CP17-1004	10 mm 3/8"
CP17-1005	13 mm 1/2"

NIPPLES

PARKAIR SERIES CP17
HOSE BARB

5611

PART NUMBER	CONNECTION
CP17-5002	6 mm 1/4"
CP17-5003	8 mm 5/16"
CP17-5004	10 mm 3/8"

PARKAIR SERIES CP17
MALE THREAD

5611

PART NUMBER	CONNECTION
CP17-1152	1/4" BSPT
CP17-1154	3/8" BSPT
CP17-1155	1/2" BSPT

PARKAIR SERIES CP17
MALE THREAD

5611

PART NUMBER	CONNECTION
CP17-5152	1/4" BSPT
CP17-5154	3/8" BSPT

PARKAIR SERIES CP17
FEMALE THREAD

5611

PART NUMBER	CONNECTION
CP17-1202	1/4" BSPP
CP17-1204	3/8" BSPP
CP17-1205	1/2" BSPP

PARKAIR SERIES CP17
FEMALE THREAD

5611

PART NUMBER	CONNECTION
CP17-5202	1/4" BSPP
CP17-5204	3/8" BSPP
CP17-5205	1/2" BSPP

PARKAIR SERIES CP17
TWIN COUPLING ASSEMBLY

5611

PART NUMBER	DESCRIPTION
CP17-Y	Twin coupling assembly

You may also need ...

Clips and clamps



... on pages 910 – 935, section 17

FEATURES	BENEFITS
<ul style="list-style-type: none"> • Single action • Positive locking mechanism 	<ul style="list-style-type: none"> • Strong and durable • Robust and hardwearing
SPECIFICATIONS	
Nominal flow diameter	5.5 mm (7/32")
Flow capacity	600 l/min (21.2 CFM)*
Max. working pressure	35 bar (508 psi)
Temperature range	-20°C to +100°C (-4°F to +212°F)
MATERIALS	
Coupling body	Nickel plated steel
Coupling back part	Nickel plated brass
Sleeve	Nickel plated steel
Valve	Brass
Springs, locking O-ring & balls	Stainless steel
Seals	Nitrile NBR
Nipple	Nickel plated steel

Interchange
Vertex & Airflow Series 19

Single Shut-off

*Flow capacity measured at 6 bar (87 psi) inlet pressure and pressure drop at 0.5 bar (7 psi).

COUPLINGS

PARKAIR SERIES CP19 HOSE BARB



5612

PART NUMBER	CONNECTION
CP19-1002	6 mm 1/4"
CP19-1003	8 mm 5/16"
CP19-1004	10 mm 3/8"
CP19-1005	13 mm 1/2"

NIPPLES

PARKAIR SERIES CP19 HOSE BARB



5612

PART NUMBER	CONNECTION
CP19-5002	6 mm 1/4"
CP19-5003	8 mm 5/16"
CP19-5004	10 mm 3/8"
CP19-5005	13 mm 1/2"

PARKAIR SERIES CP19 MALE THREAD



5612

PART NUMBER	CONNECTION
CP19-1152	1/4" BSPT
CP19-1154	3/8" BSPT
CP19-1155	1/2" BSPT

PARKAIR SERIES CP19 MALE THREAD



5612

PART NUMBER	CONNECTION
CP19-5152	1/4" BSPT
CP19-5154	3/8" BSPT
CP19-5155	1/2" BSPT

PARKAIR SERIES CP19 FEMALE THREAD



5612

PART NUMBER	CONNECTION
CP19-1202	1/4" BSPP
CP19-1204	3/8" BSPP
CP19-1205	1/2" BSPP

PARKAIR SERIES CP19 FEMALE THREAD



5612

PART NUMBER	CONNECTION
CP19-5202	1/4" BSPP
CP19-5204	3/8" BSPP
CP19-5205	1/2" BSPP

PARKAIR SERIES CP19 TWIN COUPLING ASSEMBLY



5612

PART NUMBER	DESCRIPTION
CP19-Y	Twin coupling assembly

You may also need ...

Whipcheck hose



... on page 221, section 4



FEATURES	BENEFITS
<ul style="list-style-type: none"> • Compact • Lightweight 	<ul style="list-style-type: none"> • Space saving • Easy to handle

Interchange

Series 21, Series 90

Single Shut-off



SPECIFICATIONS

Nominal flow diameter	5.0 mm (3/16")
Flow capacity	560 l/min
Max. working pressure	35 bar (508 psi)
Temperature range	-20°C to +100°C (-4°F to +212°F)
Coupling body material	Nickel plated brass
Nipple material	Nickel plated brass
Locking O-ring	Stainless steel
Valves	Nickel plated brass
Seal	NBR

COUPLINGS

PARKAIR SERIES 21
HOSE BARB

5614

PART NUMBER	CONNECTION
CP21-HG04N	4 mm
CP21-1002	6 mm
CP21-1003	8 mm
CP21-HG09N	9 mm
CP21-1004	10 mm

PARKAIR SERIES 21
MALE THREAD

Not supplied with O-ring



5614

PART NUMBER	CONNECTION
CP21-1151	1/8" BSPP
CP21-1152	1/4" BSPP
CP21-1154	3/8" BSPP

PARKAIR SERIES 21
FEMALE THREAD

5614

PART NUMBER	CONNECTION
CP21-1201	1/8" BSPP
CP21-1202	1/4" BSPP
CP21-1204	3/8" BSPP

PARKAIR SERIES 21
PUSH-IN TUBE FITTINGS

5614

PART NUMBER	CONNECTION
CP21-PG04N	6 x 4 mm
CP21-PG06N	8 x 6 mm

PARKAIR SERIES 21
PANEL MOUNT
PUSH-IN FITTINGS

5614

PART NUMBER	CONNECTION
CP21-SG04N	6 x 4 mm
CP21-SG06N	8 x 6 mm

PARKAIR SERIES 21
PANEL MOUNT HOSE BARB

5614

PART NUMBER	CONNECTION
CP21-MG04N	4 mm
CP21-MG06N	6 mm
CP21-MG08N	8 mm

PARKAIR
SERIES 21
ANTI-KINK TUBE NUT

5614

PART NUMBER	CONNECTION
CP21-YP04N	6 x 4 mm
CP21-YP06N	8 x 6 mm

NIPPLES

PARKAIR SERIES 21
HOSE BARB

5614

PART NUMBER	CONNECTION
CP21-HU04N	4 mm
CP21-5001	5 mm
CP21-5002	6 mm
CP21-5003	8 mm
CP21-HU09N	9 mm
CP21-5004	10 mm

PARKAIR SERIES 21
MALE THREAD

Not supplied with O-ring



5614

PART NUMBER	CONNECTION
CP21-5151	1/8" BSPP
CP21-5152	1/4" BSPP
CP21-5154	3/8" BSPP

PARKAIR SERIES 21
FEMALE THREAD

5614

PART NUMBER	CONNECTION
CP21-5201	1/8" BSPP
CP21-5202	1/4" BSPP
CP21-5204	3/8" BSPP

PARKAIR SERIES 21
PUSH-IN TUBE FITTINGS

5614

PART NUMBER	CONNECTION
CP21-PU04N	6 x 4 mm
CP21-PU06N	8 x 6 mm

PARKAIR SERIES 21
PANEL MOUNT
PUSH-IN FITTINGS

5614

PART NUMBER	CONNECTION
CP21-SU04N	6 x 4 mm
CP21-SU06N	8 x 6 mm

PARKAIR SERIES 21
PANEL MOUNT HOSE BARB

5614

PART NUMBER	CONNECTION
CP21-MU04N	4 mm
CP21-MU05N	5 mm
CP21-MU06N	6 mm
CP21-MU08N	8 mm

PARKAIR
SERIES 21
ANTI-KINK TUBE NUT

5614

PART NUMBER	CONNECTION
CP21-YU04N	6 x 4 mm
CP21-YU06N	8 x 6 mm

PNEUMATIC – CP21 SERIES – COLOUR CODED

SPECIFICATIONS	
Max. working pressure	30 bar (435 psi)
Temperature range	-20°C to +100°C (-4°F to +212°F)
Coupling body and nipple material	Nickel plated brass
Locking O-ring	Stainless steel
Valves	Brass
Seal	NBR

Interchange

Other colour coded 21 series

Single Shut-off



COUPLINGS

PARKAIR – CP21 SERIES MALE THREAD



5614

PART NUMBER	CONNECTION	COLOUR CODING
CP21-EG010N	1/8" BSPP	Green
CP21-EG810N	1/8" BSPP	Red

PARKAIR - CP21 SERIES FEMALE THREAD



5614

PART NUMBER	CONNECTION	COLOUR CODING
CP21-DG013N	1/4" BSPP	Green
CP21-DG313N	1/4" BSPP	Brown
CP21-DG613N	1/4" BSPP	Blue
CP21-DG813N	1/4" BSPP	Red

NIPPLES

PARKAIR – CP21 SERIES MALE THREAD



5614

PART NUMBER	CONNECTION	COLOUR CODING
CP21-EU010N	1/8" BSPP	Green
CP21-EU810N	1/8" BSPP	Red
CP21-EU013N	1/4" BSPP	Green
CP21-EU313N	1/4" BSPP	Brown
CP21-EU613N	1/4" BSPP	Blue

PNEUMATIC – CP21 SERIES – BRASS

SPECIFICATIONS	
Nominal flow diameter	5.0 mm (3/16")
Flow capacity	550 l/min (19.4 CFM)
Max. working pressure	35 bar (510 psi)
Temperature range	-20°C to +100°C (-4°F to +212°F)
Coupling, nipple and valve material	Brass
Seal	Nitrile

FEATURES

- Compact
- Lightweight

BENEFITS

- Space saving
- Easy to handle

Interchange

Several German brands
Series 21

Single Shut-off



COUPLINGS

PARKAIR SERIES HOSE BARB



5614

PART NUMBER	CONNECTION
FSK600	6 mm
FSK900	9 mm

PARKAIR SERIES MALE THREAD



5614

PART NUMBER	CONNECTION
FSKA500	1/8" BSPP
FSKA510	1/4" BSPP

PARKAIR SERIES FEMALE THREAD



5614

PART NUMBER	CONNECTION
FSKI500	1/8" BSPP
FSKI510	1/4" BSPP

PARKAIR SERIES PUSH-IN TUBE FITTINGS



5614

PART NUMBER	CONNECTION
FSK6X4	6 x 4 mm
FSK8X6	8 x 6 mm

NIPPLES

PARKAIR SERIES HOSE BARB



5614

PART NUMBER	CONNECTION
FS600	6 mm
FS900	9 mm

PARKAIR SERIES MALE THREAD



5614

PART NUMBER	CONNECTION
FSA500	1/8" BSPP
FSA510	1/4" BSPP

PARKAIR SERIES FEMALE THREAD



5614

PART NUMBER	CONNECTION
FSI500	1/8" BSPP
FSI510	1/4" BSPP

PARKAIR SERIES PUSH-IN TUBE FITTINGS



5614

PART NUMBER	CONNECTION
FS6X4	6 x 4 mm
FS8X6	8 x 6 mm



SPECIFICATIONS

Nominal flow diameter	6.0 mm (1/4")
Flow capacity	1300 l/min (45.9 CFM)*
Max. working pressure	35 bar (508 psi)
Temperature range	-20°C to +100°C (-4°F to +212°F)

MATERIALS

Coupling body	Nickel plated brass
Sleeve	Nickel plated steel
Valve	Die cast zinc
Springs, locking O-ring & balls	Stainless steel
Seals	Nitrile NBR
Nipple	Nickel plated steel

Interchange

Series QIC 10
Series 33

Single Shut-off



*Flow capacity measured at 6 bar (87 psi) inlet pressure and pressure drop at 0.5 bar (7 psi).

COUPLINGS



5613

PARKAIR SERIES CP33
HOSE BARB

PART NUMBER	CONNECTION
CP33-1002	6 mm 1/4"
CP33-1003	8 mm 5/16"
CP33-1004	10 mm 3/8"
CP33-1005	13 mm 1/2"

NIPPLES



5613

PARKAIR SERIES CP33
HOSE BARB

PART NUMBER	CONNECTION
CP33-5002	6 mm 1/4"
CP33-5003	8 mm 5/16"
CP33-5004	10 mm 3/8"
CP33-5005	13 mm 1/2"



5613

PARKAIR SERIES CP33
MALE THREAD

PART NUMBER	CONNECTION
CP33-1152	1/4" BSPT
CP33-1154	3/8" BSPT
CP33-1155	1/2" BSPT



5613

PARKAIR SERIES CP33
MALE THREAD

PART NUMBER	CONNECTION
CP33-5152	1/4" BSPT
CP33-5154	3/8" BSPT
CP33-5155	1/2" BSPT



5613

PARKAIR SERIES CP33
FEMALE THREAD

PART NUMBER	CONNECTION
CP33-1202	1/4" BSPP
CP33-1204	3/8" BSPP
CP33-1205	1/2" BSPP



5613

PARKAIR SERIES CP33
FEMALE THREAD

PART NUMBER	CONNECTION
CP33-5202	1/4" BSPP
CP33-5204	3/8" BSPP
CP33-5205	1/2" BSPP

SPECIFICATIONS

Nominal flow diameter	10.0 mm (3/8")
Flow capacity	2500 l/min (88.3 CFM)*
Max. working pressure	35 bar (508 psi)
Temperature range	-20°C to +100°C (-4°F to +212°F)

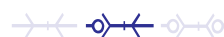
MATERIALS

Coupling body & sleeve	Nickel plated steel
Coupling back part	Nickel plated brass
Valve	Brass
Springs, locking O-ring & balls	Stainless steel
Seals	Nitrile NBR
Nipple	Nickel plated steel

Interchange

Series QIC 15
Series 34

Single Shut-off



*Flow capacity measured at 6 bar (87 psi) inlet pressure and pressure drop at 0.5 bar (7 psi).

COUPLINGS

PARKAIR SERIES CP34 HOSE BARB



5613

PART NUMBER	CONNECTION
CP34-1004	10 mm 3/8"
CP34-1005	13 mm 1/2"
CP34-1007	19 mm 3/4"

NIPPLES

PARKAIR SERIES CP34 HOSE BARB



5613

PART NUMBER	CONNECTION
CP34-5002	6 mm 1/4"
CP34-5004	10 mm 3/8"
CP34-5005	13 mm 1/2"

PARKAIR SERIES CP34 MALE THREAD



5613

PART NUMBER	CONNECTION
CP34-1154	3/8" BSPT
CP34-1155	1/2" BSPT
CP34-1156	3/4" BSPT

PARKAIR SERIES CP34 MALE THREAD



5613

PART NUMBER	CONNECTION
CP34-5154	3/8" BSPT
CP34-5155	1/2" BSPT

PARKAIR SERIES CP34 FEMALE THREAD



5613

PART NUMBER	CONNECTION
CP34-1204	3/8" BSPP
CP34-1205	1/2" BSPP
CP34-1206	3/4" BSPP

PARKAIR SERIES CP34 FEMALE THREAD



5613

PART NUMBER	CONNECTION
CP34-5204	3/8" BSPP
CP34-5205	1/2" BSPP

Also available ...



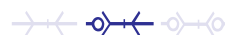
**E.MC pneumatic
products**

... on pages 328 – 355, section 6



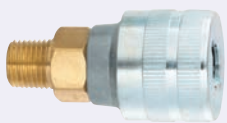
FEATURES	BENEFITS
<ul style="list-style-type: none"> Twist locking feature Corrosion resistant finish 	<ul style="list-style-type: none"> Prevents accidental disconnection Prevents hose kinking – through swivel action
SPECIFICATIONS	
Nominal bore	5.0 mm (3/16")
Max. flow rate @ 6 bar	500 l/min @ 0.5 p.d.
Max. working pressure	17 bar (250 psi)
Temperature range	-20°C to +80°C (14°F to +176°F)

Single Shut-off



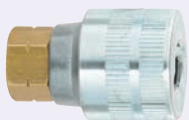
*Flow capacity measured at 6 bar (87 psi) inlet pressure and pressure drop at 0.5 bar (7 psi).

COUPLINGS – STANDARD DUTY

SCHRADER TWISTLOCK
MALE THREAD

8210

PART NUMBER	CONNECTION
SC9793D-12	1/4" BSPT
SC9792D-12	3/8" BSPT

SCHRADER TWISTLOCK
FEMALE THREAD

8210

PART NUMBER	CONNECTION
SC8952DL-12	1/4" BSPP

NIPPLES – STANDARD DUTY

SCHRADER TWISTLOCK
HOSE BARB

8210

PART NUMBER	CONNECTION
SC8787-11	6 mm 1/4"
SC9750-11	8 mm 5/16"
SC8788-11	10 mm 3/8"

SCHRADER TWISTLOCK
MALE THREAD

8210

PART NUMBER	CONNECTION
SC8050B-11	1/4" BSPT

SCHRADER TWISTLOCK
FEMALE THREAD

8210

PART NUMBER	CONNECTION
SC8278L-11	1/4" BSPP

COUPLINGS – HEAVY DUTY

SPECIFICATIONS

Nominal bore	8.5 mm (5/16")
Max. flow rate	2,800 l/min (100 CFM)*

SCHRADER TWISTLOCK
FEMALE THREAD

8210

PART NUMBER	CONNECTION
SC1054EL-14	1/4" BSPP
SC1095EL-38	3/8" BSPP
SC1461EL-12	1/2" BSPP

NIPPLES – HEAVY DUTY

SCHRADER TWISTLOCK
HOSE BARB

8210

PART NUMBER	CONNECTION
SC1097-11	10 mm 3/8"
SC1098-11	13 mm 1/2"

SCHRADER TWISTLOCK
MALE THREAD

8210

PART NUMBER	CONNECTION
SC8624B-11	1/4" BSPT
SC9739-11	3/8" BSPT
SC8807-11	1/2" BSPT

SCHRADER TWISTLOCK
FEMALE THREAD

8210

PART NUMBER	CONNECTION
SC1261EL-12	1/4" BSPT
SC1096B-11	3/8" BSPT

FEATURES	BENEFITS
<ul style="list-style-type: none"> • Push to connect and lock • Twist sleeve 1/8 turn to unlock and release 	<ul style="list-style-type: none"> • Protects against accidental uncoupling
SPECIFICATIONS	
Flow capacity	850 l/min (30.0 CFM)*
Max. working pressure	17 bar (250 psi)
Min. burst pressure	140 bar (2030 psi)
Temperature range	-40°C to +107°C (-40°F to +225°F)
Locking device	Spring plates
Coupling material	Steel / aluminium
Nipple material	Hardened steel
Valve	Steel
Seal	Nitrile

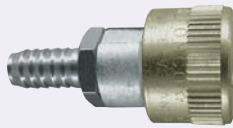
Interchange
Series 17

Single Shut-off

*Flow capacity measured at 6 bar (87 psi) inlet pressure and pressure drop at 0.5 bar (7 psi).

COUPLINGS

PARKAIR SERIES 399 HOSE BARB



5620

PART NUMBER	CONNECTION
C103991002	6 mm 1/4"
C103991004	10 mm 3/8"

PARKAIR SERIES 399 MALE THREAD



5620

PART NUMBER	CONNECTION
C103991152	1/4" BSPT
C103991154	3/8" BSPT

PARKAIR SERIES 399 FEMALE THREAD



5620

PART NUMBER	CONNECTION
C103991202	1/4" BSPP

NIPPLES

PARKAIR SERIES 399 HOSE BARB



5620

PART NUMBER	CONNECTION
C103995002	6 mm 1/4"
C103995003	8 mm 5/16"
C103995004	10 mm 3/8"
C103995005	13 mm 1/2"

PARKAIR SERIES 399 MALE THREAD



5620

PART NUMBER	CONNECTION
C103995151	1/8" BSPT
C103995152	1/4" BSPT
C103995154	3/8" BSPT
C103995155	1/2" BSPT

PARKAIR SERIES 399 FEMALE THREAD



5620

PART NUMBER	CONNECTION
C103995201	1/8" BSPP
C103995202	1/4" BSPP
C103995204	3/8" BSPP

WHIP HOSE ASSEMBLIES

PARKAIR SERIES 399 NIPPLE TO BSPT MALE 0.5 metre length



1350

PART NUMBER	mm	ins	BSPT	bar
H-GP08L399	8.0	5/16	1/4	20
H-GP10L399	10.0	3/8	3/8	20

You may also need ...

Rubber alloy hose



... on page 507, section 10



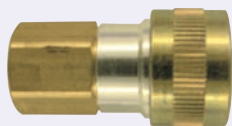
FEATURES	BENEFITS
<ul style="list-style-type: none"> • Push-to-connect and lock • Twist sleeve 1/8 turn to unlock and release 	<ul style="list-style-type: none"> • Protects against accidental uncoupling
SPECIFICATIONS	
Flow capacity	2835 l/min (100.0 CFM)*
Max. working pressure	20 bar (300 psi)
Temperature range	-12°C to +74°C (+10°F to +165°F)
Coupling material	Brass / aluminium
Nipple material	Hardened steel
Release sleeve	Zinc and yellow passivated steel
Valve	Steel
Seal	Nitrile

Interchange
Series 68

Single Shut-off

*Flow capacity measured at 6 bar (87 psi) inlet pressure and pressure drop at 0.5 bar (7 psi).

COUPLINGS



5620

**PARKAIR SERIES 499
FEMALE THREAD**

PART NUMBER	CONNECTION
C104991205	1/2" FPT

NIPPLES



5620

**PARKAIR SERIES 499
HOSE BARB**

PART NUMBER	CONNECTION
C104995004	10 mm 3/8"
C104995005	13 mm 1/2"



5620

**PARKAIR SERIES 499
MALE THREAD**

PART NUMBER	CONNECTION
C104995152	1/4" BSPT
C104995154	3/8" BSPT
C104995155	1/2" BSPT
C104995157	3/4" BSPT



5620

**PARKAIR SERIES 499
FEMALE THREAD**

PART NUMBER	CONNECTION
C104995202	1/4" BSPP
C104995204	3/8" BSPP
C104995205	1/2" BSPP

You may also need ...

Tubing, hose and ducting

- PVC tubing and hose
- Nylon tubing and hose
- Polyurethane tube and recoils

... on pages 496 – 567, section 10



FEATURES	BENEFITS
<ul style="list-style-type: none"> • Single action • Positive locking mechanism 	<ul style="list-style-type: none"> • Strong and durable • Robust and hardwearing
SPECIFICATIONS	
Nominal flow diameter	4.8 mm (3/16")
Flow capacity	1210 l/min (43.0 CFM)*
Max. working pressure	14 bar (200 psi)
Temperature range	-40°C to +100°C (-40°F to +212°F)
Coupling material	Zinc plated steel

Interchange
Series 19

Single Shut-off

*Flow capacity measured at 6 bar (87 psi) inlet pressure and pressure drop at 0.5 bar (7 psi).

COUPLINGS

PCL AIRFLOW SERIES HOSE BARB



8220

PART NUMBER	CONNECTION
CAC2R02	6 mm 1/4"
CAC2S02	8 mm 5/16"
CAC2T02	10 mm 3/8"

PCL AIRFLOW SERIES MALE THREAD



8220

PART NUMBER	CONNECTION
CAC2CM02	1/4" BSPT
CAC2EM02	3/8" BSPT
CAC2JM02	1/2" BSPT

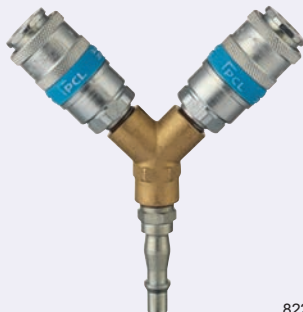
PCL AIRFLOW SERIES FEMALE THREAD



8220

PART NUMBER	CONNECTION
CAC2CF02	1/4" BSPP
CAC2EF02	3/8" BSPP
CAC2JF02	1/2" BSPP

PCL AIRFLOW SERIES TWIN COUPLING



8220

PART NUMBER	DESCRIPTION
CAC6103	Twin coupling

NIPPLES

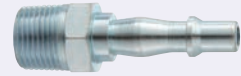
PCL STANDARD ADAPTOR HOSE BARB



215

PART NUMBER	CONNECTION
C102955001	5 mm 3/16"
C102955002	6 mm 1/4"
C102955003	8 mm 5/16"
C102955004	10 mm 3/8"
C102955005	13 mm 1/2"

PCL STANDARD ADAPTOR MALE THREAD



215

PART NUMBER	CONNECTION
C102955152	1/4" BSPT
C102955154	3/8" BSPT
C102955155	1/2" BSPT

PCL STANDARD ADAPTOR FEMALE THREAD



215

PART NUMBER	CONNECTION
C102955202	1/4" BSPP
C102955204	3/8" BSPP
C102955205	1/2" BSPP

You may also need ...

Braided PVC hose



... on pages 498 – 499, section 10



FEATURES	BENEFITS
<ul style="list-style-type: none"> • Double action • Positive locking mechanism • Protective shoulder 	<ul style="list-style-type: none"> • Strong and durable • Robust and hardwearing • Minimises accidental disconnection
SPECIFICATIONS	
Nominal flow diameter	4.8 mm (3/16")
Flow capacity	1210 l/min (43.0 CFM)*
Max. working pressure	14 bar (200 psi)
Temperature range	-40°C to +100°C (-40°F to +212°F)
Coupling material	Zinc plated steel

Interchange
Series 19

Single Shut-off

*Flow capacity measured at 6 bar (87 psi) inlet pressure and pressure drop at 0.5 bar (7 psi).

COUPLINGS

PCL VERTEX SERIES
HOSE BARB

8220

PART NUMBER	CONNECTION
CAC9R02	6 mm 1/4"
CAC9S02	8 mm 5/16"
CAC9T02	10 mm 3/8"

PCL VERTEX SERIES
MALE THREAD

8220

PART NUMBER	CONNECTION
CAC9CM02	1/4" BSPT
CAC9EM02	3/8" BSPT
CAC9JM02	1/2" BSPT

PCL VERTEX SERIES
FEMALE THREAD

8220

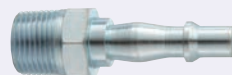
PART NUMBER	CONNECTION
CAC9CF02	1/4" BSPP
CAC9EF02	3/8" BSPP
CAC9JF02	1/2" BSPP

NIPPLES

PCL STANDARD ADAPTOR
HOSE BARB

215

PART NUMBER	CONNECTION
C102955001	5 mm 3/16"
C102955002	6 mm 1/4"
C102955003	8 mm 5/16"
C102955004	10 mm 3/8"
C102955005	13 mm 1/2"

PCL STANDARD ADAPTOR
MALE THREAD

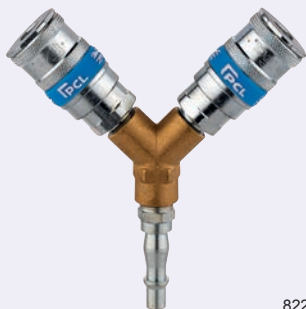
215

PART NUMBER	CONNECTION
C102955152	1/4" BSPT
C102955154	3/8" BSPT
C102955155	1/2" BSPT

PCL STANDARD ADAPTOR
FEMALE THREAD

215

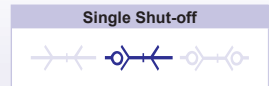
PART NUMBER	CONNECTION
C102955202	1/4" BSPP
C102955204	3/8" BSPP
C102955205	1/2" BSPP

PCL VERTEX SERIES
TWIN COUPLING

8220

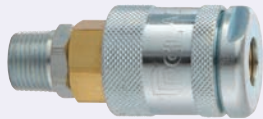
PART NUMBER	DESCRIPTION
CAC65302	Twin coupling

FEATURES	BENEFITS	
<ul style="list-style-type: none"> • Special valve design and large aperture for optimum air flow • Secure locking device • Swivel action 	<ul style="list-style-type: none"> • Efficient • Prevents accidental disconnection • Prevents hose kinking – through swivel action • Hardened steel shoulder 	
SPECIFICATIONS	60 Series	100 Series
Nominal bore	7.1 mm (9/32")	10.3 mm (13/32")
Max. flow rate @ 100 PSI	1700 l/min (60 CFM)	3313 l/min (117 CFM)
Max. working pressure	14 bar (200 psi)	
Temperature range	-40°C to +100°C (-40°F to +212°F)	
Coupling material	Zinc and yellow passivated steel	
Nipple material	Zinc and yellow passivated steel	
Valve material	Brass	Stainless steel
Seals	Nitrile	



60 SERIES COUPLINGS

PCL SERIES 60 MALE THREAD



8200

PART NUMBER	CONNECTION
CAC4CM02	1/4" BSPT
CAC4EM02	3/8" BSPT
CAC4JM02	1/2" BSPT

PCL SERIES 60 FEMALE THREAD



8200

PART NUMBER	CONNECTION
CAC4CF02	1/4" BSPP
CAC4EF02	3/8" BSPP
CAC4JF02	1/2" BSPP

60 SERIES NIPPLES

PCL SERIES 60 HOSE BARB



8200

PART NUMBER	CONNECTION
CACA2654	8 mm 5/16"
CACA2658	10 mm 3/8"
CACA2659	13 mm 1/2"

PCL SERIES 60 MALE THREAD



8200

PART NUMBER	CONNECTION
CACA2657	1/4" BSPT
CACA2661	3/8" BSPT

PCL SERIES 60 FEMALE THREAD

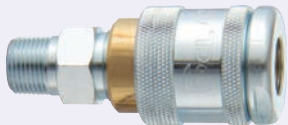


8200

PART NUMBER	CONNECTION
CACA2653	1/4" BSPP
CACA2660	3/8" BSPP

100 SERIES COUPLINGS

PCL SERIES 100 MALE THREAD



8200

PART NUMBER	CONNECTION
CAC5EM	3/8" BSPT
CAC5JM	1/2" BSPT

PCL SERIES 100 FEMALE THREAD



8200

PART NUMBER	CONNECTION
CAC5EF	3/8" BSPP
CAC5JF	1/2" BSPP

100 SERIES NIPPLES

PCL SERIES 100 HOSE BARB



8200

PART NUMBER	CONNECTION
CACA3037	10 mm 3/8"
CACA3036	13 mm 1/2"

PCL SERIES 100 MALE THREAD



8200

PART NUMBER	CONNECTION
CACA2999	3/8" BSPT
CACA3035	1/2" BSPT

PCL SERIES 100 FEMALE THREAD



8200

PART NUMBER	CONNECTION
CACA2994	3/8" BSPP

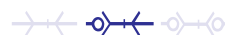


FEATURES	BENEFITS
<ul style="list-style-type: none"> Two stage, self-venting release Compatible with genuine PCL standard adaptors Hard wearing steel construction with corrosion resistant finish Affordable safety solution 	<ul style="list-style-type: none"> Safe and simple to use Prevents hose whip Creates a safe compressed air environment Conforms to ISO4414:1998 and EN 983:1996
SPECIFICATIONS	
Nominal flow diameter	4.8 mm (3/16")
Flow capacity	1210 l/min (43.0 CFM)*
Max. working pressure	14 bar (200 psi)
Temperature range	-40°C to +100°C (-40°F to +212°F)
Coupling material	Steel

Interchange

PCL standard adaptor,
Airflow, Vertex, Series 19

Single Shut-off



*Flow capacity measured at 6 bar (87 psi) inlet pressure and pressure drop at 0.5 bar (7 psi).

COUPLINGS

SAFEFLOW SAFETY SERIES
HOSE BARB

8200

PART NUMBER	CONNECTION
CSC21R	6 mm 1/4"
CSC21S	8 mm 5/16"
CSC21T	10 mm 3/8"

SAFEFLOW SAFETY SERIES
MALE THREAD

8200

PART NUMBER	CONNECTION
CSC21CM	1/4" BSPT
CSC21EM	3/8" BSPT
CSC21JM	1/2" BSPT

SAFEFLOW SAFETY SERIES
FEMALE THREAD

8200

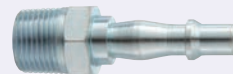
PART NUMBER	CONNECTION
CSC21CF	1/4" BSPT
CSC21EF	3/8" BSPT
CSC21JF	1/2" BSPT

NIPPLES

PCL STANDARD ADAPTOR
HOSE BARB

215

PART NUMBER	CONNECTION
C102955001	5 mm 3/16"
C102955002	6 mm 1/4"
C102955003	8 mm 5/16"
C102955004	10 mm 3/8"
C102955005	13 mm 1/2"

PCL STANDARD ADAPTOR
MALE THREAD

215

PART NUMBER	CONNECTION
C102955152	1/4" BSPT
C102955154	3/8" BSPT
C102955155	1/2" BSPT

PCL STANDARD ADAPTOR
FEMALE THREAD

215

PART NUMBER	CONNECTION
C102955202	1/4" BSPP
C102955204	3/8" BSPP
C102955205	1/2" BSPP

FEATURES	BENEFITS
• Compact and lightweight	• Prevent accidental disconnection
SPECIFICATIONS	
Nominal flow diameter	5.6 mm (7/32")
Max. flow rate @ 100 psi	1530 l/min (54.0 CFM)*
Max. working pressure	17 bar (250 psi)
Temperature range	-20°C to +80°C (-4°F to +176°F)
Coupling material	Zinc plated steel

Single Shut-off



*Flow capacity measured at 6 bar (87 psi) inlet pressure and pressure drop at 0.5 bar (7 psi).

SOCKET HALVES

PCL INSTANT-AIR HOSE BARB



920

PART NUMBER	CONNECTION
FPT8800SU4	6 mm 1/4"
FPT8800SU5	8 mm 5/16"
FPT8800SU6	10 mm 3/8"

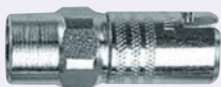
PCL INSTANT-AIR MALE THREAD



920

PART NUMBER	CONNECTION
FPT8825	1/4" BSPP
FPT8827	3/8" BSPP
FPT9095	1/2" BSPT

PCL INSTANT-AIR FEMALE THREAD



920

PART NUMBER	CONNECTION
FPT8823	1/4" BSP
FPT8800	3/8" BSP
FPT9096	1/2" BSP

PLUG HALVES – NON SWIVEL

PCL INSTANT-AIR HOSE BARB



920

PART NUMBER	CONNECTION
FPT8802SU4	6 mm 1/4"
FPT8802SU5	8 mm 5/16"
FPT8802SU6	10 mm 3/8"

PCL INSTANT-AIR MALE THREAD



920

PART NUMBER	CONNECTION
FPT8808	1/4" BSPP
FPT8817	3/8" BSPP

PCL INSTANT-AIR FEMALE THREAD



920

PART NUMBER	CONNECTION
FPT8806	1/4" BSPP
FPT8802	3/8" BSPP

PLUG HALVES – SWIVEL

PCL INSTANT-AIR HOSE BARB



920

PART NUMBER	CONNECTION
FPT8804SU4	6 mm 1/4"
FPT8804SU5	8 mm 5/16"
FPT8804SU6	10 mm 3/8"

PCL INSTANT-AIR MALE THREAD



920

PART NUMBER	CONNECTION
FPT8836	1/4" BSPP
FPT8838	3/8" BSPP

PCL INSTANT-AIR FEMALE THREAD

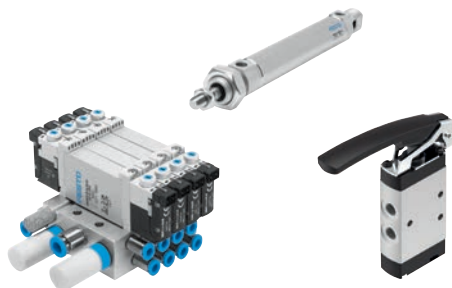


920

PART NUMBER	CONNECTION
FPT8834	1/4" BSPP
FPT8804	3/8" BSPP

Also available ...

Festo products



... on pages 416 – 453, section 8



FEATURES	BENEFITS
• Compact and lightweight	• Prevent accidental disconnection
SPECIFICATIONS	
Nominal flow diameter	5.6 mm (7/32")
Max. flow rate @ 100 psi	1530 l/min (54.0 CFM)*
Max. working pressure	17 bar (250 psi)
Temperature range	-20°C to +80°C (-4°F to +176°F)
Coupling material	Chrome plated brass

Single Shut-off



*Flow capacity measured at 6 bar (87 psi) inlet pressure and pressure drop at 0.5 bar (7 psi).

SOCKET HALVES

PCL INSTANT-AIR
HOSE BARB

920

PART NUMBER	CONNECTION
FPT8813	12 mm 1/2"

PLUG HALVES – NON SWIVEL

PCL INSTANT-AIR
MALE THREAD

920

PART NUMBER	CONNECTION
FPT8809	1/4" BSPP

PCL INSTANT-AIR
MALE THREAD

920

PART NUMBER	CONNECTION
FPT8826	1/4" BSPP
FPT8811	1/2" BSPP

PLUG HALVES – SWIVEL

PCL INSTANT-AIR
HOSE BARB

920

PART NUMBER	CONNECTION
FPT8819	1/2"

PCL INSTANT-AIR
FEMALE THREAD

920

PART NUMBER	CONNECTION
FPT8824	1/4" BSP
FPT8812	1/2" BSPP

PCL INSTANT-AIR
MALE THREAD

920

PART NUMBER	CONNECTION
FPT8837	1/4" BSPP

You may also need ...

Recoil assemblies



... on page 521, section 10

PCL INSTANT-AIR
MALE THREAD

920

PART NUMBER	CONNECTION
FPT8820	1/2" BSPP

PCL INSTANT-AIR
FEMALE THREAD

920

PART NUMBER	CONNECTION
FPT8821	1/2" BSPP

FEATURES

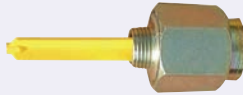
- Series A airline couplings to BS AU 138a: 1980
- Series B airline couplings to BS AU 138b: 2000

SPECIFICATIONS

Max. working pressure	10 bar (145 psi)
Temperature range	-10°C to +80°C (+14°F to +176°F)
Series A body	Carbon steel 5 micron zinc plated and yellow passivate
Series B body	Carbon steel plated 12 micron zinc-iron with black passivate
Series B locking sleeve	Aluminium

TRACTOR

PARKAIR AIRLINE SERIES A SELF SEALING VALVES



2540

PART NUMBER	CONNECTION	TYPE
ZVCM3501	1/2" BSP	Service line
ZVCM3770	22 mm	Service line

PARKAIR AIRLINE SERIES A SELF SEALING VALVES



2540

PART NUMBER	CONNECTION	TYPE
ZVCF3400	1/2" BSP	Emergency line / auxiliary
ZVCF3771	22 mm	Emergency line / auxiliary

PARKAIR AIRLINE SERIES A



2540

PART NUMBER	CONNECTION	TYPE
ZVCF3398	1/2" BSP	Auxiliary
ZVCF3763	22 mm	Auxiliary

PARKAIR AIRLINE SERIES A



2540

PART NUMBER	CONNECTION	TYPE
ZVCF3397	1/2" BSP	Emergency + service line
ZVCF3772	22 mm	Emergency + service line

PARKAIR AIRLINE SERIES B



2542

PART NUMBER	CONNECTION	TYPE
ZVCF4009	1/2" BSP	Emergency line
ZVCF4004	16 mm	Emergency line
ZVCF4000	22 mm	Emergency line

PARKAIR AIRLINE SERIES B



2542

PART NUMBER	CONNECTION	TYPE
ZVCF4015	1/2" BSP	Service line
ZVCF4003	22 mm	Service line

TRAILER

PARKAIR AIRLINE SERIES A



2540

PART NUMBER	CONNECTION	TYPE
ZVCM3075	1/2" BSP	Auxiliary
ZVCM3734	22 mm	Auxiliary

PARKAIR AIRLINE SERIES A VALVE LIFTER



2540

PART NUMBER	CONNECTION	TYPE
ZVCF3135	1/2" BSP	Service line
ZVCF3774	22 mm	Service line

PARKAIR AIRLINE SERIES A



2540

PART NUMBER	CONNECTION	TYPE
ZVCM3074	1/2" BSP	Emergency + service line
ZVCM3733	22 mm	Emergency + service line
ZVCM3734	22 mm	Auxiliary

PARKAIR AIRLINE SERIES B



2542

PART NUMBER	CONNECTION	TYPE
ZVCM4014	1/2" BSP	Emergency line
ZVCM4001	22 mm	Emergency line

PARKAIR AIRLINE SERIES B



2542

PART NUMBER	CONNECTION	TYPE
ZVCM4010	1/2" BSP	Service line
ZVCM4071	16 mm	Service line
ZVCM4002	22 mm	Service line